



*Ministry of Agriculture, Forestry
and Food Security*

**WEST AFRICA AGRICULTURAL TRANSFORMATION
PROGRAMME-**

Resettlement Policy Framework (RPF)

FINAL REPORT



TABLE OF CONTENTS

TABLE OF CONTENTS.....	I
LIST OF FIGURES.....	IV
LIST OF TABLES	IV
ACRONYMS AND ABBREVIATIONS	V
EXECUTIVE SUMMARY	VII
1.0 INTRODUCTION	1
1.1 PROJECT BACKGROUND	1
1.2 JUSTIFICATION OF WAATP	1
1.3 PURPOSE/OBJECTIVES OF THE RPF	2
1.4 SCOPE OF THE ASSIGNMENT	2
1.5 APPROACH AND METHODOLOGY	3
1.5.1 Literature Review	3
1.5.2 Stakeholder Consultations.....	3
1.5.3 Data Collation, Analysis and Preparation of Report.....	4
2.0 DESCRIPTION OF PROJECT	6
2.1 PROJECT DEVELOPMENT OBJECTIVE AND KEY INDICATORS.....	6
2.2 PROJECT COMPONENTS	6
2.2.1 Component 1: Strengthening the new model of Innovation delivery in West and Central Africa.....	7
2.2.2 Component 2: Accelerating mass adoption of improved technologies and innovations	8
2.2.3 Component 3: Policies, Markets and institutional Strengthening	9
2.2.4 Component 4. Contingent emergency response	11
2.2.5 Component 5: Project management, learning, monitoring and evaluation.	11
2.3 INSTITUTIONAL ARRANGEMENT FOR PROJECT IMPLEMENTATION	11
2.3.1 Coordination at national level.....	11
2.3.2 Coordination at Regional Level	12
2.3.3 Implementation of Components	13
3.0 POTENTIAL ADVERSE IMPACTS ON ASSETS AND LIVELIHOODS.....	14
3.1 OVERVIEW	14
3.2 ESTIMATION OF WAATP ADVERSE IMPACTS ON ASSETS AND LIVELIHOODS	15
3.3 GENERIC PROJECT IMPACTS ON ASSETS AND LIVELIHOODS.....	15
3.3.1 Categorization of impacts by type of sub-projects.....	15
3.3.2 Categorization of Project land needs	22
4.0 POLICY, LEGAL AND INSTITUTIONAL FRAMEWORK	23
4.1 RELEVANT NATIONAL REGULATORY FRAMEWORK ON LAND AND COMPENSATION.....	23
4.1.1 The Constitution of Sierra Leone (1991) and the Protection of Individual Property.....	23
4.1.2 National Lands Policy (February, 2005).....	23
4.1.3 National Environmental Policy (1994) and Cultural Heritage Issues.....	23
4.1.4 The Local Government Act, 2004	24
4.2 KEY INSTITUTIONS.....	24
4.3 LAND OWNERSHIP AND TENURE SYSTEM	24



4.4	WORLD BANK SAFEGUARD POLICY ON INVOLUNTARY RESETTLEMENT.....	25
4.4.1	<i>Procedures for Involuntary Resettlement according to World Bank OP 4.12</i>	25
4.4.2	<i>Comparison of Sierra Leonean Regulations and World Bank Policies</i>	25
5.0	PRINCIPLES, OBJECTIVES AND RESETTLEMENT PROCESS	28
5.1	PRINCIPLES.....	28
5.1.1	<i>Regulatory Framework</i>	28
5.1.2	<i>Avoidance and Minimization of Physical and Economic Displacement</i>	28
5.1.3	<i>Cut-off date</i>	29
5.1.4	<i>Income and Livelihood Restoration</i>	29
5.1.5	<i>Compensation payment</i>	30
5.1.6	<i>Consultation – Grievance Mechanisms</i>	30
5.2	OBJECTIVES OF THE RESETTLEMENT/COMPENSATION PROGRAMME	30
5.3	RESETTLEMENT PROCESSES	30
5.3.1	<i>Categorization of Project Activities with respect to Land Needs</i>	30
5.3.2	<i>Overview of the Resettlement Preparation Process</i>	31
6.0	PROPERTY VALUATION AND COMPENSATION	35
6.1	VALUATION OF PROPERTIES.....	35
6.1.1	<i>Basis of Valuation</i>	35
6.1.2	<i>Valuation Methods and Compensation Rates</i>	35
6.1.3	<i>Valuation Responsibility</i>	36
6.2	OTHER CONSIDERATIONS INTO THE COMPENSATION PACKAGE	36
6.3	TYPES OF COMPENSATION.....	36
6.4	COMPENSATION PAYMENT/CLAIM	37
7.0	ELIGIBILITY CRITERIA AND ENTITLEMENT MATRIX.....	38
8.0	GRIEVANCE REDRESS MECHANISM	41
8.1	OBJECTIVE.....	41
8.2	POTENTIAL SOURCES OF GRIEVANCES/DISPUTES.....	41
8.3	THE GRIEVANCE REDRESS PROCESS.....	42
8.3.1	<i>Registration/Receipts of complaints</i>	42
8.3.2	<i>Determining and implementing the redress action</i>	42
8.3.3	<i>Verifying the redress action</i>	42
8.3.4	<i>Monitoring and Evaluation</i>	43
8.3.5	<i>Dissatisfaction and Additional Steps</i>	43
8.4	MEMBERSHIP, FUNCTION AND FINANCING OF THE GRT.....	43
8.5	SCHEDULE TEMPLATE FOR GRIEVANCE REDRESS AND INSTITUTIONAL RESPONSIBILITIES.	44
9.0	CONSULTATIONS AND DISCLOSURE.....	45
9.1	STAKEHOLDER CONSULTATIONS CARRIED OUT	45
9.2	CONSULTATION AND DISCLOSURE REQUIREMENTS FOR THE RESETTLEMENT POLICY FRAMEWORK	46
9.3	PUBLIC CONSULTATION STRATEGY	46
10.0	VULNERABLE GROUP CONSIDERATION	50
10.1	IDENTIFICATION OF VULNERABLE GROUPS	50
10.2	ASSISTANCE TO VULNERABLE PEOPLE	50
10.3	PROVISIONS TO BE MADE IN RAPS/ARPs.....	50



11.0 MONITORING AND EVALUATION	52
11.1 OBJECTIVES OF MONITORING AND EVALUATION	52
11.2 INTERNAL MONITORING	52
11.2.1 <i>Scope and Content</i>	52
11.2.2 <i>Monitoring indicators</i>	52
11.3 INTERNAL EVALUATION.....	53
11.3.1 <i>Evaluation objectives</i>	53
11.4 EXTERNAL MONITORING AND EVALUATION	53
11.5 COMPLETION AUDIT	54
12.0 INSTITUTIONAL ARRANGEMENTS FOR IMPLEMENTATION OF THE RPF	55
12.1 INSTITUTIONAL RESPONSIBILITIES.....	55
12.2 RESOURCES, TECHNICAL SUPPORT AND CAPACITY ENHANCEMENT	56
12.2.1 <i>Resources available to deal with resettlement issues</i>	56
12.2.2 <i>Technical support and capacity building</i>	56
12.3 PRIORITY TASKS	56
12.4 PREPARATION OF ARAPs/RAPs AND SETTING UP OF RESETTLEMENT MANAGEMENT TEAMS	58
13.0 BUDGET AND FUNDING	59
13.1 ESTIMATED BUDGET TO IMPLEMENT RPF.....	59
13.2 BUDGET FOR PREPARATION AND IMPLEMENTATION OF RAPs/ARAPs	60
13.3 SOURCES AND ARRANGEMENTS FOR FUNDING.....	61
14.0 BIBLIOGRAPHY	62
APPENDICES.....	63
APPENDIX 1: SCREENING CHECKLIST FOR IDENTIFYING CASES OF INVOLUNTARY RESETTLEMENT	64
APPENDIX 2: TASKS/TOR FOR THE PREPARATION OF RAP	67
APPENDIX 3: TASKS/TOR FOR THE PREPARATION OF THE ARAP	70
APPENDIX 4: FRAMEWORK FOR THE CENSUS OF AFFECTED ASSETS AND AFFECTED PEOPLE.....	71
APPENDIX 5: COMPENSATION CLAIM AND COMMITMENT FORM.....	74
APPENDIX 6: MODEL COMPLAINT REGISTRATION AND RESOLUTION FORM.....	75
APPENDIX 7: OUTCOME OF STAKEHOLDER CONSULTATION	77



LIST OF FIGURES

FIGURE 5-1: PROPOSED INVOLUNTARY RESETTLEMENT PROCESS FOR PROJECT/SUBPROJECT WITHOUT LAND ACQUISITION.....	33
FIGURE 5-2 PROPOSED INVOLUNTARY RESETTLEMENT PROCESS FOR PROJECT/SUBPROJECT WITH LAND ACQUISITION	34
FIGURE 12.1 PROPOSED ORGANOGRAM FOR RPF IMPLEMENTATION.....	57

LIST OF TABLES

TABLE 3-1: GENERIC PROJECT IMPACTS ON ASSETS AND LIVELIHOODS.....	16
TABLE 4-1: COMPARISON OF SIERRA LEONEAN REGULATIONS WITH WORLD BANK POLICIES.....	25
TABLE 6-1: GENERAL GUIDELINES AND METHODS FOR COSTS PREPARATION	37
TABLE 7-1: ELIGIBILITY CRITERIA AND ENTITLEMENTS	39
TABLE 8-1: SCHEDULE TEMPLATE FOR GRIEVANCE REDRESS.....	44
TABLE 9-1: STAKEHOLDER ENGAGEMENT STRATEGY	47
TABLE 12-1: INSTITUTIONAL FRAMEWORK	55
TABLE 13-1: ESTIMATED BUDGET FOR RPF IMPLEMENTATION.....	59
TABLE 13-2 ITEMIZATION OF BUDGET.....	60



ACRONYMS AND ABBREVIATIONS

ARAP	Abbreviated Resettlement Action Plan
AWP&B	Annual Work Plan and Budget
CERC	Contingent Emergency Response Component
CORAF/WECARD	West and Central African Council for Agricultural Research and Development
CSOs	Civil Society Organisations
DAO	District Agricultural Officer
ECOWAP	Regional Agricultural Programme of ECOWAS Countries
ECOWAS	Economic Community of West African States
EPA	Environmental Protection Agency
FBOs	Farmer Based Organisations
FBSs	Farmer Business Schools
FFSs	Farmer Field Schools
GoSL	Government of Sierra Leone
GRM	Grievances Redress Mechanism
GRT	Grievance Redress Team
IEE	Independent External Evaluation
IFDC	International Fertiliser Development Centre
IRM/OM	Immediate Response Mechanism Operational Manual
LVA	Lands Valuation Authority
M&E	Monitoring and Evaluation
MAFFS	Ministry of Agriculture, Forestry and Food Security
MCA	Market Comparison Approach
NaFCU	National Farmers' Cooperative Union
NAFFSL	National Federation of Farmers in Sierra Leone
NARC	Njala Agricultural Research Centre
NCoS	National Centre of Specialization
NGO	Non-Governmental Organisation
NSC	National Steering Committee
PAPs	Project Affected Persons
PCU	Project Coordination Unit
PDO	Project Development Objective
PEMSD	Planning, Evaluation, Monitoring and Statistics Division
PPD	Public-Private Dialogue
RAP	Resettlement Action Plan
RCA	Replacement Cost Approach
RCoE	Regional Centre of Excellence
RoW	Right of Way
RPF	Resettlement Policy Framework
RSC	Regional Steering Committee
SCADeP	Smallholder Commercialization and Agribusiness Development Project
SLARI	Sierra Leone Agricultural Research Institute



SLeCAD	Sierra Leone Chamber for Agribusiness Development
SLL	Sierra Leonean Leones
TLRC	Tecko Livestock Research Centre
WAAPP	West Africa Agricultural Productivity Programme
WAATP	West African Agricultural Transformation Project
WAEMU	West Africa Economic and Monetary Union



EXECUTIVE SUMMARY

The Government of Sierra Leone, in collaboration with CORAF and the World Bank, has undertaken the preparation of the West African Agricultural Transformation Program (WAATP) for Sierra Leone under World Bank funding. WAATP seeks to consolidate and scale up the major achievements of WAAPP while taking into account the emerging issues of nutrition and food security, regional trade of agricultural products, climate change and youth employment. WAATP will build on these gains by further strengthening the research systems and promoting the dissemination and mass adoption of the released technologies.

WAATP is a Category B Project; the environmental and social impacts of the Project, for the most part, are expected to be minimal, site specific, and easily manageable to an acceptable level. However, the introduction of livestock as a key value chain to be supported under the project may result in additional safeguards considerations. Three Bank safeguards policies will be required, namely: Environmental and Social Assessment (OP/BP 4.01), Pest Management (OP 4.09) and Involuntary Resettlement Policy (OP/BP 4.12).

The project is required to prepare a Resettlement Policy Framework (RPF) to comply with the Operational Policies and Procedures of World Bank, notably the OP/BP 4.12 on Involuntary Resettlement, which has been triggered as well as relevant national policies and laws. The RPF will be publicly disclosed both in-country and on the World Bank Website, prior to project appraisal by the World Bank.

Brief Description of Project and Scope

The proposed West Africa Agricultural Transformation Project (WAATP) is among the projects, which supports the IDA 18 Business Plan for West Africa. It is designed to take forward the achievements of WAAPP and to help bridge identified gaps as well as champion a course that will transform agriculture in Sierra Leone and ECOWAS.

The Sierra Leone WAATP is a five-year programme that will be implemented by the Ministry of Agriculture, Forestry and Food Security (MAFFS) through the WAAPP Project Coordinating Unit (PCU). Other agencies to play significant roles in the project implementation are SLARI, SLeCAD, NAFFSL, SLeWOFF, Tecko Livestock Research Centre (TLRC) and Njala Agricultural Research Centre (NARC). The programme may have a nation-wide coverage.

The duration of implementation of the WAATP will be five years and the project would have five components:

- a) Strengthening the new model of innovation delivery in West Africa;
- b) Accelerating mass adoption of technologies and enhancing job creation in the agricultural sector;
- c) Policies, markets and institutional strengthening;
- d) Contingent emergency response;
- e) Project management, learning, monitoring and evaluation.

The overall responsibility for steering the project implementation will be with the Ministry of Agriculture, Forestry, and Food Security (MAFFS). Other state and non-state institutions such as the



Sierra Leone Agricultural Research Institute (SLARI) and the National Federation of Farmers in Sierra Leone will have primary responsibility as implementing agencies for specific activities directly related to their areas of functional responsibility, in line with the project development objective. The assignment of implementation functions and the transfer and accountability for project funds will be detailed in the financing agreement. The National Steering Committee (NSC) of WAAPP will be maintained and chaired by the Minister of Agriculture with the WAAPP Coordinator as Secretary. The existing WAAPP Project Coordination Unit (PCU) will be maintained for the WAAPP. The PCU will be responsible for coordinating and supervising the day-to-day implementation of the project.

SLARI shall provide technical leadership for Component 1. The overall technical leadership of Component 2 will rest with MAFFS. The PCU shall have overall coordination and leadership of Component 3. The PCU shall work with various partners in developing the relevant policies and strategies, and undertaking of institutional reform and capacity building.

Overview of Potential Adverse Impacts on Assets and Livelihoods

Resettlement-related impacts are expected from the implementation of some activities related to Components 1 and 2 of the WAAPP. The expected impacts of the WAAPP include:

- Loss of land (be it to government or private entities) for the provision of infrastructure associated with the project activities;
- The removal of structures or crops, if they occur on the lands to be acquired for new projects;
- Impacts on livelihoods of project affected persons (PAPs) if lands required for new construction projects (including right of way for water supply pipelines and high speed internet cables) have assets used as businesses, including farming;
- Impacts on livelihoods of farmers who release their farmlands for demonstration purposes;
- Impact on livelihood of workers at centres earmarked for rehabilitation; and
- Impacts on structures and crops on encroached sections of agricultural stations fields, if such encroached sections are required for or will be utilised by any WAAPP activity or subproject.

Relevant Legal, Regulatory and Administrative Framework

The relevant national environmental and other statutory laws and legislation particularly relevant to the project include the following:

- The Constitution of Sierra Leone (1991) and the Protection of Individual Property;
- National Lands Policy (February, 2005);
- National Environmental Policy (1994); and
- The Local Government Act, 2004.

Principles, Objectives and Resettlement Process

The principles are the basic fundamental requirements that underpin the preparation and implementation of the resettlement instrument. These principles are intended to minimize negative impacts. The principles include:

- Regulatory framework;
- Avoid, minimize or mitigate physical and economic displacement;
- Cut-off date;
- Income and livelihood restoration;



- Compensation payment prior to physical and economic displacement and at full replacement value;
- Grievance mechanisms.

The main objectives of the resettlement related/compensation programme are as follows:

- To avoid, minimize, mitigate displacement and/or compensate for adverse impacts as much as possible;
- To ensure that project affected people are consulted and their concerns included in the resettlement/compensation programme for implementation;
- To ensure that project affected people are adequately compensated for deprivation of use of land, loss of crops and structures (either farming or business/ residential structure or communal property);
- To compensate the affected units and enterprises for their loss at full replacement cost;
- To identify vulnerable groups including the elderly, physically challenged, women heads etc. among the project affected people and prescribe any special assistance they may require in terms of extra attention during the implementation of the programme; and
- To meet both national regulatory and WB requirements.

According to the World Bank Operational Policies on involuntary resettlement, preparation of a resettlement instrument is a condition for appraising projects involving involuntary resettlement. In case of programs/projects with sub-projects with known locations, the Bank requires that a satisfactory resettlement action plan (RAP) or an abbreviated resettlement plan (ARAP) that is consistent with the provisions of the policy framework be submitted to the Bank for approval before the sub-project is accepted for Bank financing (OP/BP 4.12).

The resettlement preparation process will begin with screening of WAATP subprojects/ activities to determine if there is a need for the preparation of any resettlement instrument (ARAP or RAP). The RAP will be prepared where more than 200 individuals are displaced. The ARAP will be prepared where less than 200 individuals are displaced.

Property Valuation and Compensation

The purpose of the valuation will be to assess the overall Compensation Payable as part of the assessment of resettlement related issues under the WAATP. As the detailed WAATP activities are not too clear at this stage, the scope of the valuation covers land, structures and crops/economic trees on the project site to be affected and also unavailable to the owner for usage. Loss of income or disruptions to livelihoods are considered as far as it may be appropriate for payment of compensation for the period of disruption of farming /livelihood/business.

The basis of the valuation is derived from the World Bank's Involuntary Resettlement Policy, OP 4.12; and the Constitution of Sierra Leone. The Market Comparison Approach (MCA) will be adopted for the valuation of land if there is a vibrant land market. The full Replacement Cost Approach (RCA) will be adopted for the valuation of structures (including buildings). The Enumeration Approach will be adopted for affected crops/economic plants under the project. Other Considerations into the Compensation Package include Livelihood Assistance/Loss of Income, Resettlement/Relocation Assistance and Disturbance Allowance.



The Ministry of Land, Country Planning and the Environment (MLCPE) in collaboration with the Office of the Administrator and Registrar General (OARG) will be requested by MAFFS to value affected assets/properties based on the full replacement cost principle (which include transaction cost such as labour and transport cost). Certified private valuers may also be engaged by MAFFS, where necessary especially involving private persons or if required to assist the process. These professional valuers to be used will be required to provide evidence where necessary that the rates applied are consistent with the “full replacement value” requirement.

Compensation for affected property will be in the form of cash payment and in-kind compensation, including land for land. Compensation will be paid prior to any civil works and the affected persons will only be required to vacate their land or property when this has been completed. In cases where compensation will have to be paid in-kind, the project representative and the PAPs should confirm in the MOU arrangements for the release of the land for the project (e.g. release of land for demonstration plots and farmers field schools).

Eligibility Criteria and Entitlement

Project affected persons are described as persons affected by land acquisition, land occupation, relocation, or loss of income associated with the acquisition of land and/or other assets. The basis for eligibility for compensation and entitlement are described in the table below.

Affected Assets	Eligibility criteria	Entitlement
Land	Owns the affected plot of land under Sierra Leonean laws including customary	1. Cash compensation for any unspent amount paid for a lease determined by the prevailing market rates.
		1. Compensation (in cash or kind) for the period of occupation as agreed among the parties.
Crops (food/cash crops and economic trees inclusive)	Have grown the affected crop (regardless of related land ownership)	1. Cash compensation for standing crops counted at valuation date and based upon updated rates, and 2. Disturbance allowance of 10% of (1) or at a rate determined by the government agency for valuation
Structures	Owns affected structure	1. Compensation at full replacement cost of structure 2. Cost of moving (e.g. persons/ goods in the structure under or belonging to owner) 3. Disturbance allowance of 10% of (1) or at an agreed rate determined by the government agency for valuation.
	Live in or use the affected structure on rental basis (Occupant different from owner)	1. Cost of renting similar structure (e.g. for 6 months duration) 2. Cost of moving out to new place 3. Disturbance allowance of 10%
	Owns the affected structure	1. Cost of moving affected structure to new site 2. Disturbance allowance of 10% of (1)
	Use or occupies the affected structure	1. Cost of moving occupants to new site 2. Disturbance allowance of 10% of (1) or at a rate determined by the agency for valuation [NB: if owner is same as occupant, he/she will not be entitled to this disturbance allowance].



Affected Assets	Eligibility criteria	Entitlement
Livelihoods	Use affected land for farming as livelihood sources (emphasis on perennial crops. Annual crops can be harvested prior to land entry or destruction)	1. Cash compensation for any temporary loss of income or livelihood incurred as a result of the project during the transition period (period required to re-establish farm elsewhere).
	Operate a business on Project affected land, regardless of the land ownership situation (includes squatters)	1. Cash compensation of temporary loss of income or livelihood incurred because of the Project during the period required to re-establish the business to pre-Project conditions
	Use communal resources as an element of livelihood	1. Assistance in identifying and accessing similar resources elsewhere 2. Cash compensation of temporary loss of income incurred because of the Project during the period required to access similar resources elsewhere/period required to provide alternative livelihood assistance
Cultural heritage resource (e.g. sacred site).	Use or pay homage to cultural heritage resource/ sacred site	Compensate in accordance with chance find procedure developed as part of the ESMF. This will be utilized during the project implementation.

Grievance Redress Mechanism

Grievance redress mechanism (GRM) includes the institutions, instruments, methods, and processes by which a resolution to a grievance is sought and provided. The objectives of the grievance redress process are to

- Provide affected people with avenues for making a complaint or resolving any dispute that may arise during the course of the implementation and determination of entitlements of compensation and implementation of the project;
- Ensure that appropriate and mutually acceptable redress actions are identified and implemented to the satisfaction of complainants; and
- Avoid the need to resort to judicial proceedings.

The general steps of the grievance redress process comprise:

- Registration/receipt of Complaints at the District Agricultural Office representative designated to receive all complaints and forward to Grievance Redress team within 24 hours. The Ward Committee for the project area could also receive complaints from PAPs.
- Determining and Implementing the Redress Action by the Grievance Redress Team (GRT) within 10 working days of receipt of complaints;
- Verifying the Redress Action by the GRT;
- Monitoring and Evaluation to ensure that complaints and grievances lodged by PAPs are followed-up and resolved amicably as much as possible; and
- Dissatisfaction and Alternative Actions.
 - If not satisfied, with the decision of the grievance redress team, the complainant can bring it to the attention of the Research Coordinator/ MAFFS safeguards focal persons or the Safeguard Officer for PCU to draw the attention of PCU to the unresolved grievance



- If the complainant remains dissatisfied with the mediation effort of WAATP PCU and the Research Coordinator/ MAFFS safeguards focal persons, the complainant has the option to pursue appropriate recourse via judicial process in Sierra Leone.

Consultation and Disclosure Requirements for the Resettlement Policy Framework

The resettlement instrument will be disclosed in compliance with World Bank operational policy, OP 4.12, which states that:

"As a condition of appraisal of projects involving resettlement, the borrower provides the Bank with the relevant draft resettlement instrument which conforms to this policy, and makes it available at a place accessible to displaced persons and local NGOs, in a form, manner, and language that are understandable to them. Once the Bank accepts this instrument as providing an adequate basis for project appraisal, the Bank makes it available to the public through its website. After the Bank has approved the final resettlement instrument, the Bank and the borrower disclose it again in the same manner."

As provided under WB policy OP 4.12, disclosure and consultation on the WAATP Resettlement Policy Framework will be done by the Ministry of Agriculture, Forestry and Food Security (MAFFS) through the Project Implementation Unit as follows:

- Circulation of the draft RPF for comments to all relevant institutions (e.g. PCU, relevant MAFFS directorates involved with the WAATP, SLARI, Ministry of Land, Country Planning and Environment, Office of the Administrator and Registrar General, Environmental Protection Agency and the World Bank;
- Communication of comments to the Consultant for incorporation into a final RPF, together with World Bank comments; and
- Public Disclosure of final RPF (after reviewed and cleared by both GoG & World Bank/ASPEN) both in-country (e.g. relevant District Councils, District/National MAFFS offices, District EPA offices, project communities, community libraries) and at the World Bank and MAFFS websites.

Vulnerable Group Consideration

Vulnerable groups are those at risk due to the displacement, compensation, and resettlement process. Vulnerable people to be considered under the WAATP include:

- The elderly, usually from 70 years and above;
- Widows;
- Women and children;
- Physically challenged persons;
- Mentally challenged/highly depressed persons;
- Affected Persons who are too ill, bedridden, hospitalized or stricken with HIV/AIDS;
- Unemployed youth;
- Female heads of households; and
- Migrant/settler farmers without proper land documents.

Vulnerable people will be identified at census stage. Each RAP or ARAP developed under the WAATP if any should make precise provisions with respect to assistance to vulnerable groups. Identification of vulnerable people and identification of the cause and impacts of their vulnerability, either through direct interviews by the RAP/ARAP consultant or the District Agricultural Officers (Extension Officers)



at the project inception stage or RAP/ARAP stage is critical because often vulnerable people do not participate in community meetings, and their disability/vulnerability may remain unknown. Local community leadership should be involved in the determination of who is vulnerable and by what criteria.

Monitoring and Evaluation

Monitoring and Evaluation are key components of the RPF and will be done by MAFFS. They are both internal and external and have the following general objectives:

- Screening and identifying subproject activities that require the preparation of an ARAP or RAP;
- Monitoring of specific situations or difficulties arising from implementation, and of the compliance with the objectives of the RPF and methods as set out in this RPF;
- Evaluation of the impacts of the Resettlement/Compensation Actions on PAPs' livelihood, environment, local capacities, on economic development and local communities.

Monitoring will address the following aspects:

- Social and economic monitoring:
 - follow-up of the status of displaced or affected persons,
 - follow-up of the status of farmers/individuals benefitting from the WAATP activities,
 - re-establishment of livelihoods of affected farmers/persons;
- Technical monitoring: supervision of infrastructure and housing construction, where relevant;
- Grievances and grievance management system;
- Implementation of consultation strategy; and
- Assistance in livelihood restoration: agriculture/farming and business re-establishment and assistance.

The Safeguard Specialists and the project M&E Officer will be responsible for internal monitoring and will submit quarterly reports or as agreed with the PCU. Internal evaluation of resettlement and compensation activities will be part of general assessment and review activities undertaken for the WAATP activities as a whole by the PCU. Internal evaluation arrangements will be carried out for the implementation of ARAPs/RAPs.

The PCU will supervise the implementation of the safeguards and may involve either the EPA or a qualified local consultant to carry out external monitoring and evaluation of the RPF or any RAP/ARAP developed and implemented under the WAATP. The Independent External Evaluation (IEE) will be done soon after the completion of an ARAP or RAP implementation and reported.

Institutional Arrangements for Implementation of the RPF

The main institutions involved with the implementation of the compensation/resettlement related activities are:

- Ministry of Agriculture, Forestry, and Food Security (MAFFS);
- WAATP Project Coordination Unit (PCU);
- SLARI;
- Farmer Organisations (NAFFSL, NaFCU, Women's Cooperative and SLeWoFF)
- Ministry of Land, Country Planning and Environment/ Office of the Administrator and Registrar General (MLCPE/ OARG);
- Environmental Protection Agency (EPA);



- District Councils/Traditional Authorities/Ward Committees; and
- CORAF.

The Ministry of Agriculture, Forestry, and Food Security (MAFFS) has the overall responsibility for preparing RAPS as provided in the RPF and implementing same with World Bank approval. It will ensure that all compensation and resettlement related matters are carried out satisfactorily before the disbursement of funds for the project and rehabilitation/construction works commences.

Where an ARAP or RAP is prepared for any WAATP, subproject/activity, Resettlement Management Teams should be proposed and included in the documents. The resettlement management teams should consist of three smaller teams responsible for Compensation Team; Grievance Redress Team; and Monitoring and Evaluation Team.

Budget and Funding

The estimated budget for implementing the **RPF is USD 111,000.00**. The budget will be developed from specific social surveys and mitigation/livelihood restoration measures to be developed under the preparation of the ARAP or RAP. It will cover resettlement activities including compensation cost for affected assets. A template for the itemization of budgets to be prepared under the resettlement plans with mainly cash compensation in mind has been provided in the RPF.



1.0 INTRODUCTION

The Government of Sierra Leone, in collaboration with CORAF and the World Bank, has undertaken the preparation of the West African Agricultural Transformation Project (WAATP) for Sierra Leone under World Bank funding. WAATP's overall objective is to strengthen a regional agricultural innovations system able to scale up the adoption of climate smart technologies, enhance job creation and increase access to regional markets for targeted commodities.

1.1 Project Background

The Government of Sierra Leone (GoSL) developed a post-Ebola emergency economic recovery programme that includes supporting key sectors, such as Agriculture, that are considered to be key drivers of economic growth and employment generation. Part of the strategy included the Rapid Ebola Seed Distribution support provided by GoSL and the World Bank through West Africa Agricultural Productivity Programme (WAAPP), a regional programme funded by the World Bank and the Japanese Government.

The support included the provision and dissemination of seed of improved varieties, with the aim of making improved planting materials available to communities and rapidly increasing productivity and production. This significantly cushioned the effect on farmers, who lost most of their seeds as a result of reduced farming activities as the Ebola forced them to abandon their communities and farms, and or placed restriction on their movement.

Overall coordination of WAAPP at the regional level was undertaken by West and Central African Council for Agricultural Research and Development (CORAF/WECARD). WAAPP is aligned to the regional agricultural programme of ECOWAS countries (ECOWAP). Sierra Leone implemented the first phase of WAAPP from 2011-2016 as one of seven countries referred to as WAAPP-1C countries, being the third series of countries implementing the first phase of the programme.

WAAPP made significant progress in rebuilding the research system in terms of human capacity, infrastructure and equipment. Human capacity development included both short term and long term academic trainings. The research system was also supported to develop technologies in rice and cassava, which also included the release of Fourteen technologies (7 for Rice and 7 for Cassava).

In spite of the gains from WAAPP, there is a need for more long term sustainable support to build a sustainable seed system that will ensure that farmers have access to improved planting materials and technologies,

1.2 Justification of WAATP

In order to consolidate and scale up the major achievements gained under WAAPP while taking into account the emerging issues of nutrition and food security, regional trade of agricultural products, climate change and youth employment, the World Bank and ECOWAS intend to formulate a West Africa



Agriculture Transformation Program (WAATP). WAATP will build on these gains by further strengthening the research systems and promoting the dissemination and mass adoption of the released technologies.

More specifically, the key priority areas of WAATP would be as follows:

- a) Consolidating the capacity of the National Centre of Specialization (NCoS) on mangrove, with the technologies, equipment, human capacity and infrastructure necessary to transform it into Regional Centre of Excellence (RCoE) for mangrove;
- b) Up-scaling the dissemination and mass adoption of the technologies developed under WAAPP;
- c) Strengthen the seed sector system to ensure sustainable seed production and multiplication;
- d) Mainstreaming the cross-cutting issues such as climate change and nutrition; and
- e) Promote youth empowerment and employment.

In addition to the two value chains (Rice and Cassava) supported under WAAPP, WAATP will also support the livestock value chain (mainly poultry and small ruminants). The emphasis of WAATP will be the wide dissemination and mass adoption of technologies of Rice and Cassava developed under WAAPP; while for poultry and small ruminants the focus will be on promoting the adoption of proven technologies developed by other countries.

From the regional perspective, Sierra Leone is showing comparative advantages in mangrove rice research, as well for increased field productivity as for improved post-harvest technologies (i.e. parboiling processes). Therefore, consolidation of currently rehabilitated R&D systems should enable Sierra Leone to further strengthen the capacities of the National Centre of Specialization (NCoS) for mangrove rice and its transformation into a Regional Centre of Excellence (RCoE) within the overall cluster for rice. Thus, WAATP will ensure Sierra Leone's contribution to regional technology development, especially in the area of mangrove rice, but also the country to benefit from technical innovations developed by NCoS/RCoE of other WAATP participating countries in the region. Overall, the regional dimension of WAATP would include activities related to transfer of know-how and technologies for rice and other key commodities, with technical support of the West and Central African Council for Agricultural Research and Development (CORAF/WECARD). WAATP will ensure that results generated under WAAPP will be shared regularly with other WAATP countries during regional wrap-up implementation support mission meetings, contributing to strengthening regional integration in Mano River Union and WAATP countries.

1.3 Purpose/Objectives of the RPF

The objective of the RPF is to establish a comprehensive framework for implementing involuntary resettlement and/or compensation arising from the implementation of the WAATP. The development of an RPF is a requirement for projects that may entail involuntary resettlement, issues of compensation, acquisition of land, impact on livelihood, or restricted access to natural resources under the World Bank safeguard policy on involuntary resettlement (OP 4.12).

1.4 Scope of the Assignment

The main tasks and associated deliverables are outlined below:



- Determine impacts on people, property, livelihoods, including estimation of the population to compensate / move and categories of people and goods that will be affected;
- Identify legal and institutional aspects of acquisition and ownership;
- Outline and describe principles, objectives, and resettlement process, with reference to the OP/BP 4.12. Special attention would be given to the timetable for the planning and implementation of resettlement in relation to the timing of the approval and implementation of sub-projects;
- Define eligibility criteria for various categories of people affected;
- Define methods of property valuation and determination of rates of compensation;
- Develop a Grievances Redress Mechanism (GRM) that will be adopted during project implementation;
- Define methods and procedures for consultation and participation of those affected with their entities;
- Establish a framework for identification, support, and willingness to provide in the Resettlement Action Plan (RAP) for vulnerable groups, including women and youth;
- Define institutional arrangements for the implementation of the RPF;
- Develop a TOR for the preparation of the Resettlement Action Plans (RAP);
- Identify budget and funding sources (including procedures and terms of payment);
- Develop plans for the public disclosure of the document in country.

1.5 Approach and Methodology

The RPF has been prepared in accordance with the applicable World Bank safeguard policy on involuntary resettlement (OP 4.12) and Sierra Leonean policies and laws relating to resettlement, land acquisition and compensation for loss of property. The preparation of the RPF involved the following activities:

- Literature review;
- Consultations with selected key stakeholders (sector institutions and farmers);
- Data collation, analysis and preparation of reports.

1.5.1 Literature Review

The following relevant documents were reviewed:

- Sierra Leonean policies, plans and regulations regarding resettlement, land take and compensation;
- World Bank Safeguard Policy, OP 4.12 on Involuntary Resettlement and how it compares with the Sierra Leonean laws and procedures;
- RPFs prepared for other recent World Bank projects in Sierra Leone (e.g. Smallholder Commercialization and Agribusiness Development Project (SCADeP) and Decentralized Service Delivery Project Phase II); and
- Relevant literature from internet sources (see bibliography).

1.5.2 Stakeholder Consultations

The Consultant extensively engaged key stakeholders, as identified in the Country Proposal Paper (January 2018), between 20 February and 24 February 2018, to be apprised of the key resettlement issues that may arise from the implementation of the WAATP, as well as gain an insight into the legal and institutional framework available to support its implementation.



Key stakeholders consulted are categorised as project implementers, beneficiaries and Non-governmental organisations as described below:

Project Implementers

1. Ministry of Agriculture, Forestry and Food Security (MAFFS)
 - a. Extension Services, Head Office
 - b. Crops Services, Head Office
 - c. Gender in Agriculture and Nutrition, Head Office
 - d. NGO Desk, Head Office
 - e. Bombali District Crops Division, Makeni;
2. Sierra Leone Agricultural Research Institute (SLARI), Freetown;
3. Sierra Leone Chamber for Agribusiness Development (SLeCAD), Freetown;
4. National Federation of Farmers in Sierra Leone (NAFFSL), Freetown;
5. Sierra Leone Women Farmers Forum, Freetown.

Project Beneficiaries

6. Farmers (Including women and youth farmers)
 - a. Koya Rural District, Kwama Community;
 - b. Bombali District, Makeni.

Non-Governmental Organisations

7. Inter Aide;
8. Samako Agricultural Project;
9. Wipe Our Tears;
10. Farmers Network;
11. CNC Watch New Africa Women; and
12. Children's Foundation of Sierra Leone.

Details of the stakeholder engagement and constraints of the consultant in this regard are provided in **Section 9**.

1.5.3 Data Collation, Analysis and Preparation of Report

Relevant data and information gathered which are in line with the requirements under the scope of works formed the content of the RPF. The RPF has the following major sections:

1. Executive summary
2. Introduction
3. Description of Project
4. Potential Impacts on Assets and Livelihoods
5. Legal and Institutional Framework
6. Principles, Objectives, and Resettlement Process
7. Eligibility Criteria and Entitlements
8. Methods for Property Valuation and Compensation
9. PCU Grievances Redress Mechanism
10. Consultations and Disclosure
11. Vulnerable Group Consideration



12. Monitoring and Evaluation
13. Institutional Arrangements for Implementation of the RPF
14. Budget and Funding Sources
15. Bibliography
16. Appendices



2.0 DESCRIPTION OF PROJECT

The proposed West Africa Agricultural Transformation Project (WAATP) is among the projects, which supports the IDA 18 Business Plan for West Africa. It is designed to take forward the achievements of WAAPP and to help bridge identified gaps as well as champion a course that will transform agriculture in Sierra Leone and ECOWAS.

The WAATP is a five-year programme implemented by the Ministry of Agriculture, Forestry and Food Security (MAFFS) through the WAAPP Project Coordinating Unit (PCU). Other agencies to play significant roles in the project implementation are SLARI, SLeCAD, NAFFSL, SLeWoFF, Tecko Livestock Research Centre (TLRC) and Njala Agricultural Research Centre (NARC). The programme may have a nation-wide coverage.

2.1 Project Development Objective and Key Indicators

The Project Development Objective (PDO) of the WAATP is to accelerate adoption of agricultural improved technologies and innovations by small scale producers and contribute to improve enabling environment for regional market integration in the ECOWAS region and enable the Governments to respond promptly and effectively to eligible emergencies.

The proposed PDO-level performance indicators are as follows:

- a) number of processors who have adopted improved technologies (disaggregated by country, type and sex);
- b) number of farmers adopting improved agricultural technology (disaggregated by country and sex);
- c) farmers/processors adopting an improved technology generated by other countries;
- d) jobs for youth created as a result of project interventions (disaggregated by country and sex);
- e) stakeholder platform marketing and trade Action Plans developed and implemented; and
- f) share of targeted beneficiaries with rating 'Satisfied' or above on project interventions.

The primary project beneficiaries include agricultural producers and processors, women groups, SMEs, youth, and other value chain actors. Additional beneficiaries will include research institutions, public and private advisory services, government institutions, and regional institutions fostering agricultural development and markets development across West Africa. The program will target at least 50 percent of women and at least 30 percent of youth and young adults (18 – 35 years).

2.2 Project Components

The duration of implementation of the WAATP will be five years and the project would have five components:

- f) Strengthening the new model of innovation delivery in West Africa;
- g) Accelerating mass adoption of technologies and enhancing job creation in the agricultural sector;
- h) Policies, markets and institutional strengthening;
- i) Contingent emergency response;
- j) Project management, learning, monitoring and evaluation.



The details of the activities are described below.

2.2.1 Component 1: Strengthening the new model of Innovation delivery in West and Central Africa

The component aims to continue to enhance regional linkages between and among national research entities, strengthen the National Centres of Specialization (NCoS) supported under WAAPP, and upgrade them to become ECOWAS Regional Centres of Excellence (RCoE) focusing on priority lines of research to be addressed regionally. The RCoE will play a key role in ensuring a solid link with the CGIAR research system, the private sector and the networking of national agricultural research and extension systems to deliver, in a sustainable manner, improved technologies and innovation - which will be screened to ensure that they are climate smart and gender sensitive - for scaling up.

This component will be sub-divided in two sub-components: (i) Support to NCS/RCE development/strengthening; and (ii) support to adaptive research for priority national value chains and related innovation exchange at regional level.

Sub-Component 1.1: Support to NCS/RCE development/strengthening

This component will support the following:

- i. capacity building of the RCoE network institutions in the participating countries in the domain of adaptive research, including academic training for the next generation of scientists and for research technicians;
- ii. provision of additional infrastructure, equipment and other supplies;
- iii. complementary financing of priority research programs and grants for research activities for the NCoS/RCoE (climate smart technologies, nutrition including bio fortification, soil health, etc.);
- iv. partnerships and technical assistance from CGIAR centres and other advanced research institutions for capacity building, technical backstopping, joint research activities;
- v. annual planning and result-sharing workshops organized by each RCoE, including participation of the research system in the development of Innovation Platforms; and
- vi. grants for varietal maintenance as well as the production of required breeder and foundation seed production at national level (priority commodities – rice, cassava, small livestock).

Sub-Component 1.2: Strengthening of adaptive research (R&D)

Further to supporting the NCoS, WAATP will build on WAAPP adaptive research actions especially in the areas of priority commodities such as cassava and livestock (small ruminants and poultry). Support will be provided to NARC (Njala) and TLRC (Telo) adaptive research Centres in the following areas:

- i. Human capacity strengthening;
- ii. Infrastructures /equipment;
- iii. Additional support/grant to priority adaptive research and development activities;
- iv. Strengthening of regional and international partnerships; and
- v. Breeder and foundation seed for cassava and improved livestock breeds.



2.2.2 Component 2: Accelerating mass adoption of improved technologies and innovations

The component aims at scaling up adoption of improved agricultural technologies and innovations improving promoting innovation for youth that will accelerate productivity increases and thus contribute to higher food availability in the sub-region and enhanced regional trade flows.

Sub-Component 2.1: Demand-driven market-based mass adoption and technologies and innovations

This sub-component aims to address the key drivers of productivity increase and accelerate mass adoption of innovations. The sub-component will further consolidate activities already initiated under WAAPP including:

- i. implementation of a regional knowledge management and communication for development action plan to address information needs of farmers and value chain actors;
- ii. strengthening of national private and public extension services and their networking at regional level;
- iii. scaling up the use of ICT and innovations in outreach, such as E-extension, E-vouchers, electronic technology markets, regional geo-spatial monitoring of technology adoption, innovative rural finance tools;
- iv. promotion of multi stakeholder platforms, such as Innovation Platforms and alliances with the private sector and farmers' organizations as conduits for new technology mainstreaming; and
- v. promotion of south-south collaboration, national and regional technology fairs and events.

Sub-Component 2.2 Strengthening the seed sector

As a follow-up of WAAPP support, WAATP will provide both institutional and operational support towards gradual development of a sustainable seed system in Sierra Leone and better farmer access to improved planting material.

Institutional support for national seed system¹. To build on the adopted seed act and harmonized seed regulations supported by WAAPP, WAATP will popularize seed act (comp 3.1) and support the implementation of the institutional strengthening of the seed sector by:

- i. establishing an electronic seed platform and linking it with the West African Regional Seed Platform to strengthening seed information flow (supply, demand, suppliers, supply source, price, quantity and quality, etc.);
- ii. supporting the establishment and bi-annual meetings of the national seed board and varietal seed release committee;
- iii. rehabilitating and equipping the seed certification laboratory (moisture content, purity analysis, germination rates & seed health testing) and the administrative building for seed certification;
- iv. providing transport equipment (vehicle, motorbikes) for the seed certification agency;
- v. enhancing human resources capacity development (short technical and MSc training);
- vi. organising study tours and experience exchanges with other seed companies in the region;
- vii. providing specialized technical/extension and marketing services to seed producers;

¹ With technical assistance from CORAF to help establish a workable seed system



- viii. identifying and training FBOs as specialized seed farmer associations purposely for certified seed multiplication in the country - priority shall be given to women and youths FBOs;
- ix. training functional community-based quality seed producers to ensure availability of quality seeds adapted to local conditions; and
- x. establishing a network of commodity based agrodealers across the country. Furthermore, institutional support will also be provided to SMP by strengthening human resources (1 MSc and technical training for technicians), transport equipment (truck 10T) and small internal seed laboratory equipment.

Major operational support for enhanced farmer access to improved seed within strengthened national seed systems will be provided by WAATP, including: (i) rice seed production (gradual increase to reach up to 3600 tons/year from year 4 on); (ii) decentralized cassava planting material production (up to 150 ha /year) and (iii) support to ‘Pass on the Gift’ Scheme established in Ghana to meet local circumstance and conditions for poultry and the small ruminants (goats and sheep).

Sub-Component 2.3: Jobs for Youth

The sub-component aims at scaling up adoption of innovations and improved technologies by the educated and non-educated youth who are already in the rural area or showing a great interest in the agricultural sector. The project would specifically target youth in the range of 18-35-years, and work with them to improve their skills in agricultural production, services to agriculture, value addition. The sub-component will scale up activities piloted under WAAPP including:

- i. development of a regional strategy and national action plans for youth employment in the agricultural sector based on the outcome of the ongoing stocktaking exercise of pilot activities initiated under WAAPP;
- ii. specific vocational capacity training for youth and scaling up of public and private sector led incubation systems/hubs/centres (such as the Ibadan University and IITA ones, the WAAPP experiences);
- iii. networking of youth entrepreneurs, business plan competition and development of a mentorship program at national and regional levels; and
- iv. start-up and kits to support innovation adoption by youth.

2.2.3 Component 3: Policies, Markets and institutional Strengthening

The aim of this innovative component is to create the enabling policy environment to accelerate agricultural transformation, connect production to markets and strengthen regional integration institutions. Efforts will be focused on removing barriers to cross-border trade in technologies and inputs, identifying products for which regional demand is growing, and strengthening the institutions at the regional level to provide backstopping for the reform process. The component will have 3 sub-components: (i) regional policies and regulations; (ii) regional markets development; and (iii) national and regional institutional capacity building.

Sub-Component 3.1: Regional policies and regulations

The sub-component will consolidate activities launched under WAAPP and address new areas of policy reforms necessary to accelerate agricultural transformation in the sub-region. It will support:



- (i) stocktaking of the implementation of the regional regulations on seeds, pesticides, fertilizer and veterinarian products and implementation of the resulting action plan, building on existing regional initiatives and effective implementation at the country level;
- (ii) updating and implementation of the existing common strategies and action plans for gender, communication, climate change; but also focus on new areas including
- (iii) support to the harmonisation of coordinated regional trade policies and regulatory reforms to address non-tariff barriers to regional trade.

This subcomponent will also promote the validation and dissemination of these updated policies and regulatory frameworks to the value chain actors. Practically in Sierra Leone, this sub-component will support activities started under WAAPP as well as new issues related to required policy reforms for accelerating the agricultural transformation.

Sub-Component 3.2: Regional markets development (for targeted products)

This sub component aims to identify products for which regional demand is growing rapidly, and for which potential exists to increase trans-border trade flows. A selected number of products (2 or 3) will be identified, based on experience, in the main trade corridors and will be used to test the business environment and provide feedback for scale up. The sub-component will therefore support:

- i) establishment and operationalization of regional multi-stakeholder initiatives – Public-Private Dialogue (PPD), trade knowledge platforms, regional Innovation Platforms- to identify key bottlenecks and support collective action and advocacy;
- ii) preparation and implementation of detailed action plans to implement proposed solutions for identified barriers in value chains that inhibit cross-border flows of technologies and/or products; a positive list of eligible activities will be identified during preparation;
- iii) the continuing monitoring of trade-flows of these commodities along the main trade corridors, identifying the main legal and illegal barriers and practices hindering trade and increasing the transaction costs between farms and forks and;
- iv) south-south exchange visits with SADC and the East African Community; and
- v) feasibility studies for regional warehouse receipt system and a private sector-driven regional commodities exchange market. It will furthermore explore collaboration with IFC to pilot innovative schemes including “risk sharing facility” and “business plan competition” to facilitate access to investment capital and support to the best investment projects.

This sub-component will promote the development of regional markets for targeted commodities to accelerate the substitution of imported commodities in coastal countries and self-sufficiency food in the Sahelian countries.

Sub-Component 3.3: National & Regional Institutional capacity building

The sub-component would strengthen the capacities of the regional institutions responsible for leading and coordinating the definition of regional policies, strategies and programs for agricultural development. It would support activities aimed at:

- i) strengthening the capacities of ECOWAS, ECCAS and WAEMU respective Departments of Agriculture in policy analysis, regional programs preparation, implementation and monitoring, regional benchmarking and impact evaluation;



- ii) strengthening/clarifying the relationships between these regional institutions and regional technical agencies such as CORAF and CILSS;
- iii) strengthening CORAF capacity to implement programs identified by ECOWS/WAEMU in the areas of technology generation and dissemination. (see CORAF proposal)

It will also support building the capacities of national Ministries and relevant institutions (including producer associations, inter-professional bodies, private sector and civil society organizations) to implement updated national policies and action plans, including for policy and regulations, but also for mainstreaming major cross-cutting issues to be considered under WAATP.

2.2.4 Component 4. Contingent emergency response

This component, known as the Contingent Emergency Response Component (CERC), will be available should the need arise to redirect some of the project resources to contribute with other projects in the participating countries portfolio to respond to an eligible emergency or crisis. The available resources would be made available to finance emergency response activities and to address crisis and emergency needs. An Immediate Response Mechanism Coordinating Agency and expenditure management procedures will be defined in an Immediate Response Mechanism Operational Manual (IRM/OM), to be prepared separately and approved by the World Bank, in line with guidance provided under OP 10.00, paragraph 11. In case this component is to be used, the project will be restructured to allocate financing.

2.2.5 Component 5: Project management, learning, monitoring and evaluation.

Sub-Component 5.1. Harmonized coordination and management

The Project will build on the successful institutional arrangements mechanisms of WAAPP. It will be coordinated:

- i) at the national levels by existing national Coordinating units (PCU), which successfully coordinated the implementation of WAAPP; and
- ii) at the regional level by CORAF based on a well-defined mandate agreed by the Regional Steering Committee (RSC) under the Annual Work Plan and Budget (AWP&B).

To this end, as all other participating countries, Sierra Leone will contribute to the regional coordination and technical assistance provided by CORAF up to an amount of 1/15th of its total budget. The management of the regional budget will be implemented within an approved annual work plan and budget approved by all participating countries.

2.3 Institutional Arrangement for Project Implementation

2.3.1 Coordination at national level

Lead ministry

The overall responsibility for steering the project implementation will be with the Ministry of Agriculture, Forestry, and Food Security (MAFFS). Other state and non-state institutions such as the Sierra Leone Agricultural Research Institute (SLARI) and the National Federation of Farmers in Sierra Leone will have primary responsibility as implementing agencies for specific activities directly related to their areas of



functional responsibility, in line with the project development objective. The assignment of implementation functions and the transfer and accountability for project funds will be detailed in the financing agreement.

Steering committee

The National Steering Committee (NSC) of WAAPP will be maintained and chaired by the Minister of Agriculture (or his/her designee) with the WAATP Coordinator as Secretary. The NSC would have a policy and advisory role and would meet at least twice a year. The functions of the NSC will include: (i) approving the annual work plans; (ii) approving the annual procurement plan; and (iii) reviewing progress in the implementation of the work plans and other aspects of project performance, including taking responsibility on fiduciary oversight responsibilities following World Bank procedures on financial management and procurement; and (iv) ensuring that there is policy and implementation coordination, not only between sub-components of the project but also among all the project implementing institutions.

Coordination unit

The existing WAAPP Project Coordination Unit (PCU) will be maintained for the WAATP. The PCU will be responsible for coordinating and supervising the day-to-day implementation of the project. The Coordinator of WAATP will continue to be assisted by the current team of professional and support staff. The functions of the PCU will include: (i) ensure the overall coordination of the project, make sure implementation of components activities complement each other; (ii) manage project funds on behalf of the executing agencies, keep financial records according to international standards, implement internal management control, and ensure regular external audit (in collaboration with the Audit Authority in the country); (iii) prepare and implement Annual Work Plans and Budgets aggregating demand from beneficiary institutions/agencies, and work plans and budgets proposed by implementing agencies/services providers; (iv) identify potential implementing agencies/goods and service providers, organize their selection/hiring, negotiate and sign contracts with selected implementation partners/goods & service providers, and carry out all procurement work related to the project as per approved procurement plans; (v) prepare quarterly, semi-annual and annual project progress and monitoring and evaluation (M&E) reports.

2.3.2 Coordination at Regional Level

ECOWAS has mandated CORAF to coordinate the Program at Regional level. ECOWAS therefore chairs the Regional Oversight Committee that meets twice yearly to review the AW&B and implementation progress. CORAF has already demonstrated strong capacity to coordinate project implementation at the regional level through its implementation of WAAPP-1A, -1B, and -1C. WAATP will continue to adapt and strengthen CORAF/WECARD's implementation arrangements in the key areas of communications, FM, procurement, and M&E to remain in compliance with the Bank's fiduciary and reporting requirements. At least one-fifteenth (1/15th) of the proceeds of the IDA financing will be made available to CORAF.



2.3.3 Implementation of Components

Institutions, partners and implementation mechanisms by component and sub-components.

Component 1: SLARI shall provide technical leadership for Component 1. More specifically, sub-Component 1.1 will be implemented by the Rokupr Agricultural Research Centre, which is the NCoS for mangrove rice. Sub-Component 1.2 will be implemented by the Njala Agricultural Research Centre (NARC) and the Tecko Livestock Research Centre (TLRC). NARC will be responsible to implementation relating to the cassava value chain, while TLRC will be responsible for the livestock value chain. a Research Coordinator will be recruited to coordinate all of the activities of the research centres under Component 1. The Centres will be required to sign MOU with the PCU with clearly define deliverables over the life span of the project.

Component 2: The overall technical leadership of Component 2 will rest with MAFFS. However, various divisions within MAFFS and other implementing partners will be responsible for specific programmes/activities within the components as outlined below:

- The Extension Division shall take lead on reforming the extension delivery services and the innovation platforms;
- Crops Division shall be responsible for demonstration activities, cassava multiplication and the diversification activities;
- NaFFSL shall take lead on the capacity building to farmer based organisations;
- SLeSCA shall take lead on the institutional strengthening of the seed system;
- SMP shall take lead on the rice multiplication scheme;
- the Livestock Division shall lead the livestock multiplication programme; and
- the overall Youth empowerment and employment programme shall be led by the PCU, with support from SLeCAD on the Youth networking and mentoring aspect.

Component 3: The PCU shall have overall coordination and leadership of Component 3. The PCU shall work with various partners in developing the relevant policies and strategies, and undertaking of institutional reform and capacity building.



3.0 POTENTIAL ADVERSE IMPACTS ON ASSETS AND LIVELIHOODS

3.1 Overview

The implementation of the WAATP is not expected to have significant adverse impacts on assets and livelihoods. Some specific activities to be undertaken or promoted under the WAATP may, however, require land acquisition and result in loss of assets and livelihood.

Resettlement-related impacts are expected from the implementation of some activities related to Components 1 and 2 of the WAATP. The expected impacts of the WAATP include:

- Loss of land (be it to government or private entities) for the provision of infrastructure associated with the project activities;
- The removal of structures or crops, if they occur on the lands to be acquired for new projects;
- Impacts on livelihoods of project affected persons (PAPs) if lands required for new construction projects (including right of way for water supply pipelines and high speed internet cables) have assets used as businesses, including farming;
- Impacts on livelihoods of farmers whose farmlands demonstrations are undertaken;
- Impact on livelihood of workers at centres earmarked for rehabilitation; and
- Impacts on structures and crops on encroached sections of agricultural stations fields, if such encroached sections are required for or will be utilised by any WAATP activity or subproject.

There will not be the need for land acquisitions for the rehabilitation/renovation of existing facilities such as laboratories, libraries and cassava processing centre and offices. Although there will be demonstrations of agriculture technologies on farmlands the farmers/individuals on whose farms these occur may be benefiting from these improved technologies and services but will only be temporarily disturbed during these periods. Thus, permanent land acquisition is to be a requirement for community demonstration plots and farmers' fields.

Provisions are made under this RPF to avoid, minimize, mitigate or compensate for residual impacts: specifically, any WAATP subproject or activity entailing impacts on inhabited dwellings shall be redesigned to address such impacts feasible and practical to do so.

However, as WAATP activities and locations are not fully known in sufficient detail at the time of preparing this RPF, provisions are made in the RPF to accommodate all potential situations, including cases that may entail actual displacement/resettlement, and livelihood restoration assistance in concordance with the WB policy on Involuntary Resettlement.

This WB Involuntary Resettlement policy, OP 4.12, is triggered by the anticipation of some impacts on assets and livelihoods, however limited these impacts may eventually turn out to be. In situations where specific location of works/activities/services or sub-projects are not known at the time of appraisal, OP 4.12 requires the borrower to develop a RPF to guide the implementation of social safeguards relating to land acquisition, resettlement and compensation issues.



One or more Abbreviated Resettlement Action Plan (ARAP) or Resettlement Action Plan (RAP) will be prepared as appropriate for affected persons under any WAATP subprojects in consistency with the principles set forth in this RPF. The RPF will be approved and disclosed prior to the implementation of the various social safeguards requirements of the WAATP project while each ARAP or RAP will be approved, disclosed and implemented before the civil works of the WAATP subprojects or activities creating the adverse impacts on assets/livelihoods are implemented.

3.2 Estimation of WAATP Adverse Impacts on Assets and Livelihoods

Currently, specific WAATP activities are not fully known in sufficient detail. However, it is anticipated that the population to be affected under WAATP or PAPs may not exceed 200. Thus, a full Resettlement Action Plan will not be required for any of the sub-projects.

3.3 Generic Project Impacts on Assets and Livelihoods

3.3.1 Categorization of impacts by type of sub-projects

Table 3.1 shows in generic terms what impacts on assets (land, crops, structures, cultural heritage resource) and livelihoods can be expected from identified project activities under the WAATP.



Table 3-1: Generic Project Impacts on Assets and Livelihoods

Action area	Detailed activities to be financed	Implement ation	Potential Impact on Assets, Livelihoods				
			Land	Crops	Structures	Livelihoods	Cultural resources
Component 1: Strengthening the new model of Innovation delivery in West and Central Africa							
<i>Sub-component 1.1: Support to NCoS/RCE development/ strengthening</i>							
(ii) NCoS Infrastructures/ equipment	Upscaling of electricity provision preferably Solar source of electricity	SLARI/ RARC/PCU	Land may be required for Solar installation and right of way (RoW) for lines	Crops on acquired land may be affected	Any structures on land may be demolished or moved, where possible	If continued operation of an income generating activity is disturbed.	Any cultural heritage resource (e.g. cemetery, shrine or grove) on or near land may be affected
	Upscaling of water supply systems, including solar water -powered pumping machine	SLARI/ RARC/PCU	Land may be required for water supply installation and right of way for pipelines	Crops on acquired land may be affected	Any structures on land may be demolished or moved, where possible	If continued operation of an income generating activity is disturbed.	Any cultural heritage resource (e.g. cemetery, shrine or grove) on or near land may be affected
	Reinforcement wall to contain erosion of biological sciences lab	SLARI/ RARC/PCU	No land acquisition required	Crops may be affected (due to encroachment)	Structures may be affected (due to encroachment)	If continued operation of an income generating activity is disturbed.	Any cultural heritage resource (e.g. cemetery, shrine or grove) on or near land may be affected
	Provision of high speed internet facility	SLARI/ RARC/PCU	Land may be required right of way for communication lines	Crops on acquired land may be affected	No demolition or removal of structures anticipated due to limited RoW requirements.	No impact on livelihood is expected due to limited RoW requirements.	No impact on cultural resources is expected due to limited RoW requirements.



Action area	Detailed activities to be financed	Implementation	Potential Impact on Assets, Livelihoods				
			Land	Crops	Structures	Livelihoods	Cultural resources
	Upgrading of research facilities (screen houses-, soil labs)	SLARI/ RARC/PCU	Land may be required for screen houses and soil labs	Crops on acquired land may be affected	Any structures at the proposed site may be demolished or moved, where possible	If continued operation of an income generating activity is disturbed.	Any cultural heritage resource (e.g. cemetery, shrine or grove) on or near land may be affected
Sub-component 1.2: Strengthening of adaptive research (R&D)							
(ii) Infrastructure s /equipment	NARC - Cassava						
	Upgrading electricity provision to office/laboratories (Site 2) and residences (Site 3): 250 and 50 KVA Generators	SLARI/ NARC/PCU	Land may be required for electricity provision and right of way for lines	Crops on acquired land may be affected	Any structures at the proposed site may be demolished or moved, where possible	If continued operation of an income generating activity is disturbed.	Any cultural heritage resource (e.g. cemetery, shrine or grove) on or near land may be affected
	Upgrading water supply, filtration and distillation systems to office/laboratories (Site 2) and residential sites	SLARI/ NARC/PCU	Land may be required for water supply installation and right of way for pipelines	Crops on acquired land may be affected	Any structures at the proposed site may be demolished or moved, where possible	If continued operation of an income generating activity is disturbed.	Any cultural heritage resource (e.g. cemetery, shrine or grove) on or near land may be affected
	Provision of high speed internet facility	SLARI/ NARC/PCU	Land may be required right of way for communication lines	Crops on acquired land may be affected	No demolition or removal of structures anticipated due to limited RoW requirements.	No impact on livelihood is expected due to limited RoW requirements.	No impact on cultural resources is expected due to limited RoW requirements.
TLRC – Poultry and Small Ruminants							



Action area	Detailed activities to be financed	Implementation	Potential Impact on Assets, Livelihoods				
			Land	Crops	Structures	Livelihoods	Cultural resources
	Construction Of Poultry Houses	SLARI/TLRC/PCU	Land required for construction	Crops on acquired land may be affected	Any structures on land may be demolished or moved, where possible	If continued operation of an income generating activity is disturbed.	Any cultural heritage resource (e.g. cemetery, shrine or grove) on or near land may be affected
	Construction Of Small Ruminant Houses	SLARI/TLRC/PCU	Land required for construction	Crops on acquired land may be affected	Any structures on land may be demolished or moved, where possible	If continued operation of an income generating activity is disturbed.	Any cultural heritage resource (e.g. cemetery, shrine or grove) on or near land may be affected
	Provision of high speed internet facility	SLARI/TLRC/PCU	Land may be required right of way for communication lines	Crops on acquired land may be affected	No demolition or removal of structures anticipated due to limited RoW requirements.	No impact on livelihood is expected due to limited RoW requirements.	No impact on cultural resources is expected due to limited RoW requirements.
(iii) Adaptive research programmes (incl. competitive)	LIVESTOCK – TLRC (chicken and small ruminants)						
	Aquaculture: fingerling technology introduction - Nigeria	SLARI, MAFFS, PCU	Land will be required for implementation of land based aquaculture projects	Crops on acquired land may be affected	Structures on land may be affected	Farmers/business owner's livelihoods	Any cultural heritage resource (e.g. cemetery, shrine or grove) on or near land may be affected
(iv) Strengthened partnerships	IFDC (Technical Assistance on Soils & Fertilization)	SLARI/IFDC/ Mano River Countries/ PCU	No land acquisition required for existing research fields except for new fields.	Crops on acquired land may be affected	Any structures at the proposed site may be demolished	If continued operation of an income generating	Any cultural heritage resource (e.g. cemetery, shrine or



Action area	Detailed activities to be financed	Implementation	Potential Impact on Assets, Livelihoods				
			Land	Crops	Structures	Livelihoods	Cultural resources
	<ul style="list-style-type: none"> In-country and on-field soil testing 				or moved, where possible	activity is disturbed.	grove) on or near land may be affected
Component. 2 Accelerating mass adoption of technologies and job creation							
Sub-component 2.1: Demand-driven market-based mass adoption and technologies and innovations							
Scaling-up of technology dissemination	Support the establishment of demonstration trials through Farmer Field Schools (FFSs) and Farmer Business Schools (FBSs) for the rapid dissemination released technologies – Support 3 demonstration trial sites per year in 24 blocks in six (6) districts.	MAFFS, SLARI, NaFFSL, SLeWoFF, PCU	No land acquisition required for existing research fields except for new fields.	Crops on acquired land may be affected	Any structures at the proposed site may be demolished or moved, where possible	If continued operation of an income generating activity is disturbed.	Any cultural heritage resource (e.g. cemetery, shrine or grove) on or near land may be affected
Diversification of farm/rural activities	Introduce, demonstrate, and distribute improved technologies for Aquaculture for youth and women groups: - NCoS NIGERIA	MAFFS, TLRC, NaFFSL/ SLeWoFF, PCU	Land will be required for implementation of land based aquaculture projects	Crops on acquired land may be affected	Any structures at the proposed site may be demolished or moved, where possible	If continued operation of an income generating activity is disturbed.	Any cultural heritage resource (e.g. cemetery, shrine or grove) on or near land may be affected



Action area	Detailed activities to be financed	Implementation	Potential Impact on Assets, Livelihoods				
			Land	Crops	Structures	Livelihoods	Cultural resources
	Support the establishment of hatchery facility for the production of fingerlings for fisheries and aquaculture	MAFFS, SLARI, Njala University, SLeCAD, PCU	Land will be required for establishment of hatcheries and fingerlings.	Crops on acquired land may be affected	Any structures at the proposed site may be demolished or moved, where possible	If continued operation of an income generating activity is disturbed.	Any cultural heritage resource (e.g. cemetery, shrine or grove) on or near land may be affected
Sub-component 2.2: Strengthening access to technical services (seed, mechanization, processing, etc.)							
Operational support - seed production	Rice seed production (gradual increase to reach up to 3600 tons/year from year 4 onwards)	SLARI, MAFFS, PCU	Additional land may be required for increased production	Crops on acquired land may be affected	Any structures at the proposed site may be demolished or moved, where possible	If continued operation of an income generating activity is disturbed.	Any cultural heritage resource (e.g. cemetery, shrine or grove) on or near land may be affected
	Decentralized cassava planting material production (up to 150 ha /year)	SLARI, MAFFS, PCU	Additional land may be required for increased production	Crops on acquired land may be affected	Any structures at the proposed site may be demolished or moved, where possible	If continued operation of an income generating activity is disturbed.	Any cultural heritage resource (e.g. cemetery, shrine or grove) on or near land may be affected
Sub-component 2.3: Jobs for youth							
Investment and support to youth enterprise start-up	Provide adequate start-up capital in the form a matching grant that will provide seed capital for youth entrepreneurs and youth-led SMEs in rural production and	PCU, MAFFS, SLeCAD,	Land required for the establishment of processing enterprises	Crops on acquired land may be affected	Any structures at the proposed site may be demolished or moved, where possible	If continued operation of an income generating activity is disturbed.	Any cultural heritage resource (e.g. cemetery, shrine or grove) on or near land may be affected



Action area	Detailed activities to be financed	Implementation	Potential Impact on Assets, Livelihoods				
			Land	Crops	Structures	Livelihoods	Cultural resources
	processing enterprises inclusive service provision)						
Component 3- Policies, Markets and institutional strengthening							
Environmental and Social Safeguards Management	Grievance Redress Mechanism - Reviewed and Rolled-Out	MAFFS, SLARI, PCU	Successful implementation of the mechanism will have significant impact on the success of the project				



3.3.2 Categorization of Project land needs

Land required for the Project may fall under the following three categories:

- Land permanently required (acquisition required under the Project) for construction and operation of new facilities (e.g. construction of poultry houses, construction of small ruminant houses, aquaculture facilities, fingerling hatchery facility, processing centres, water supply installations, electricity supply installations, communication installations), as well as land required for increased production (cassava planting material, seed production etc.);
- Land temporarily required (temporary occupation required under the Project) for the duration of project activities (e.g. demonstration and farmers field school plots, and RoW for utility lines, if required); and
- Land permanently required (no acquisition required under the Project) for the duration of project activities and support [e.g. existing acquired government lands to be used for the project (e.g. agric and veterinary stations, seed producing institutions) and private lands to benefit from up-scaling activities under the Project).



4.0 POLICY, LEGAL AND INSTITUTIONAL FRAMEWORK

4.1 Relevant National Regulatory Framework on Land and Compensation

The relevant national environmental and other statutory laws and legislation particularly relevant to the project include the following:

- The Constitution of Sierra Leone (1991) and the Protection of Individual Property;
- National Lands Policy (February, 2005);
- National Environmental Policy (1994); and
- The Local Government Act, 2004.

4.1.1 *The Constitution of Sierra Leone (1991) and the Protection of Individual Property*

The Constitution includes some provisions to protect the right of individuals to private property, but Section 21 of the Constitution also sets principles under which citizens may be deprived of their property in the public interest. Consequently, the Constitution upholds the fundamental rights of citizens to own property and receive support from the State when that property is compulsorily acquired by the State. Furthermore, it also makes provision for the prompt payment of adequate compensation and access to the court or other impartial and independent authority for the determination of the land owner's interest or right, and the amount of any compensation to which he is entitled and for the purpose of obtaining prompt payment of that compensation.

4.1.2 *National Lands Policy (February, 2005)*

The National Lands Policy addresses many of the lapses of the dual land tenure system in Sierra Leone (freehold in the Western Area and communal in the provinces). It also provides for the compulsory acquisition of land in the public interest. The principles of the land policy include:

- Principle of land as a common national or communal property resource held in trust for the people and which must be used in the long-term interest of the people of Sierra Leone. Such principle only holds where it does not violate existing rights of private ownership.
- Compensation to be paid for lands acquired through compulsory acquisition will be fair and adequate and will be determined, among other things, through negotiations that take into consideration government investment in the area.
- No interest in or right over any land belonging to an individual or family can be disposed of without consultation with the owner or occupier of the land.
- No interest in or right over any land belonging to an individual or family can be compulsorily acquired without payment, in reasonable time, of fair and adequate compensation.

4.1.3 *National Environmental Policy (1994) and Cultural Heritage Issues*

The National Environmental Policy (1994) provides for the collection of relevant data on biological diversity and cultural heritage. It seeks to promote socio-economic and cultural development through the preservation of biological diversity for the sustainable utilization of natural resources. There are references to the preservation and/or respectful removal (taking into consideration cultural sensitivities) of "society bushes" for large-scale agribusiness and other purposes in various regulations.



4.1.4 The Local Government Act, 2004

The Act establishes the Local Council as the highest political authority in the locality who shall have legislative and executive powers to be exercised in accordance with this Act. This Act in its First Schedule under section 2 establishes the localities namely: Districts, Towns, and Cities. The part II of this schedule also establishes the number of Paramount Chiefs in each local council. The Third Schedule establishes the functions to be devolved to the local councils. The Fourth and Fifth Schedules establish departments under each local council, and Valuation list and Rate Books respectively.

4.2 Key Institutions

Ministry of Lands, Country Planning and Environment (MLCPE)

Land governance in Sierra Leone is the responsibility of several state and private agencies, departments, offices and officials. The Ministry of Lands, Country Planning and Environment (MLCPE) is the main institution responsible for taking leadership of all land matters in the country. It is responsible for land registration, and preparation of land use plans.

Office of the Administrator and Registrar General (OARG)

Office of Administrator and Registrar General (OARG) only functions in the Western Area, situated in Freetown, the capital city. It has as its supervisory Ministry, the Office of the Attorney General and Ministry of Justice; and generates revenue for the government. The OARG is responsible for the registration and administration of every instrument required to be registered by law including land transactions, industrial property, business registration, marriages and administration of estates of the deceased, apart from that of “births and deaths”. [1]
[SEP]

The main link between the MLCPE and OARG is that survey plans are prepared by the MLCPE and sent to OARG for registration. There has been an attempt to automate the link between OARG and MLCPE in the transfer of land documents through the implementation of the Land Registration Project at MLCPE and the Electronic Documentation of Land Records Project at OARG, both funded by the Investment Climate Facility for Africa.

The OARG is responsible for registering land instruments (survey plans and conveyances), as established by the General Registration Act of 1960 (Cap 256).

4.3 Land Ownership and Tenure System

Land tenure in Sierra Leone is characterized by a dual ownership structure due to historical developments. The Western Area including the Freetown Peninsula is governed by an English system of land ownership which includes fee conveyances, mortgages and leases. Unoccupied and uncultivated land remain Crown (State) land. Thus, land in these areas is either owned by individual families or is Crown land. Communally owned land does not exist in the Western Area.

Land in the rest of the country (i.e. the majority of the agricultural land) is held in communal ownership under customary tenure and is controlled by traditional rulers who administer it on behalf of their communities in accordance with customary principles and usage. Though there are minor differences



among the various ethnic communities, the general trend is that land is considered a divine heritage not to be bought and sold.

The responsibility to ensure the preservation of the land and subsequent enjoyment by future generations therefore rests on the community as a whole. The absolute interest in land vests in families. In other words, it is the land-owning family, which deals in its land. The Paramount Chief is regarded as the custodian of the land on behalf of the entire Chiefdom but decisions regarding the land are the preserve of heads of the various land owning families.

4.4 World Bank Safeguard Policy on Involuntary Resettlement

4.4.1 Procedures for Involuntary Resettlement according to World Bank OP 4.12

World Bank’s Operational Policy (OP) 4.12 (World Bank, 2004) is seen internationally as the global standard for involuntary resettlement guidelines. The fundamental objective of resettlement planning, as stipulated in OP 4.12, is to avoid resettlement wherever feasible, or, where resettlement is unavoidable, to minimize its extent and to explore all viable alternatives.

Where land acquisition and involuntary resettlement are unavoidable, resettlement and compensation activities are carried out in a manner that provides sufficient opportunity for the Project Affected Persons (PAPs) to participate in the planning and implementation of the operation. Furthermore, if incomes are adversely affected, adequate investment is required to give the persons displaced by the Project the opportunity to at least restore their income.

The OP 4.12 further requires particular attention to be given to the needs of vulnerable groups especially those below the poverty line, including:

- i. Landless individuals and households;
- ii. Elderly persons
- iii. Women and children;
- iv. Indigenous groups and ethnic minorities; and
- v. Other disadvantaged persons.

4.4.2 Comparison of Sierra Leonean Regulations and World Bank Policies

There are significant gaps between Sierra Leonean regulations and World Bank policies. These are summarized in **Table 4-1**.

Table 4-1: Comparison of Sierra Leonean Regulations with World Bank Policies

Topic	Sierra Leonean Legislation Requirement	WB policy requirement	Proposed Gaps Filling Procedures
Timing of compensation payment	Prompt	Prior to displacement	Compensation payments are to be done prior to displacement.
Calculation of compensation	Fair and adequate.	Full replacement cost	The Full Replacement Cost Approach will be adopted for



Topic	Sierra Leonean Legislation Requirement	WB policy requirement	Proposed Procedures	Gaps	Filling
			the calculation of compensation. depreciation will be considered.	No	will be
Squatters	No provision for PAPs with no claim whatsoever to land. Are deemed not to be eligible and therefore not entitled to any compensation	Are to be provided resettlement assistance and compensation for lost or damaged structures, and trees or crops they planted (but no compensation for land itself)	Squatters are to be provided resettlement assistance and compensations for crops, trees and structures (but no compensation for land)		
Land Tenants	Entitled to compensation based upon the amount of rights they hold upon land under relevant laws.	Are entitled to some form of compensation whatever the legal recognition of their occupancy	Land tenants attract compensation irrespective of the legal recognition of their occupancy		
Land Users	In some cases land users have some form of secured tenure extended to them under new laws. In order cases land users not entitled to compensation for land, entitled to compensation for crops and any other economic assets.	Entitled to compensation for crops, may be entitled to replacement land and income must be restored to pre-project levels at least.	-		
Users of natural resources subject to be put under control of conservancy members for sustained use and development	No compensation when law is followed	Entitled to compensation for lost income from loss of access to or use of resources: lost income must be computed, and restored to pre-project levels at least.	Compensation to be provided for lost income.		
Owners of "Non permanent" buildings	Cash compensation based on market value or entitled to new housing or authorized land under Government (State or local) housing programs	Entitled to in kind compensation or cash compensation at full replacement cost including labour and relocation expenses, prior to displacement	PAPs entitled to in kind compensation or cash compensation at full replacement cost including labour and relocation expenses, prior to displacement		
Owners of Permanent Buildings	Cash Compensation is based on market value	Entitled to in kind compensation or cash compensation at full replacement cost including labour and relocation expenses, prior to displacement	PAPs entitled to in kind compensation or cash compensation at full replacement cost including labour and relocation expenses, prior to displacement		
Resettlement	In situations where inhabitants have to be displaced, the state is to resettle all on "suitable land	Affected people who are physically displaced are to be provided with residential housing, or	Physically displaced PAPs are to be provided with housing sites at least equivalent to the old site.		



Topic	Sierra Leonean Legislation Requirement	WB policy requirement	Proposed Gaps Filling Procedures
	with due regards for their economic well-being and social and cultural values”.	housing sites, or, as required, agricultural sites at least equivalent to the old site. Preference to be given to land-based resettlement for displaced persons whose livelihoods are land-based.	Preference to be given to land-based resettlement for displaced persons whose livelihoods are land-based (i.e. farmers, etc.). Alternatively, physically displaced PAPs can also be given equivalent cash compensation to be able to acquire similar land and put up a housing unit equivalent to the affected structure
Resettlement assistance	No specific provision with respect to additional assistance and monitoring.	Affected people are to be offered support after displacement, for a transition period	Affected people are to be offered resettlement support to cover a transition period
Vulnerable groups	No specific provision	Particular attention to be paid to vulnerable groups, especially those below the poverty line, the landless, the elderly, women, children and the disabled,	Particular attention to be paid to vulnerable groups, especially those below the poverty line, the landless, the elderly, women especially widows and single parent, children and the disabled.
Information and consultation	The owner/occupier of the land must be formally notified at least a week in advance of the intent to enter, and be given at least 24 hours’ notice before actual entry	Displaced persons and their communities are provided timely and relevant information, consulted on resettlement options, and offered opportunities to participate in planning, implementing, and monitoring resettlement.	Displaced persons and their communities are provided timely and relevant information, consulted on resettlement options, and offered opportunities to participate in planning, implementing, and monitoring resettlement.
Grievance	Formal and informal mechanisms and formal access to court of law	Functional, effective, transparent and accessible grievance mechanisms to be established	Functional, effective, transparent and accessible grievance mechanisms to be established



5.0 PRINCIPLES, OBJECTIVES AND RESETTLEMENT PROCESS

5.1 Principles

The principles are the basic fundamental requirements that underpin the preparation and implementation of the resettlement instrument. These principles are intended to minimize negative impacts. The principles include:

- Regulatory framework;
- Minimization of physical and economic displacement;
- Cut-off date;
- Income and livelihood restoration;
- Compensation payment prior to physical and economic displacement and at full replacement value;
- Hold meaningful consultations with all stakeholders; and
- Grievance mechanisms.

5.1.1 Regulatory Framework

Any impact of the WAATP on land and/or people (land acquisition, resettlement, and livelihood restoration of affected people) will be addressed in compliance with the Constitution of Sierra Leone, with other national regulations, and with the World Bank safeguard policy on involuntary resettlement (OP 4.12). Where there are gaps or inconsistencies between national laws and the World Bank policy, the World Bank policy OP 4.12 will apply in compliance with this RPF.

5.1.2 Avoidance and Minimization of Physical and Economic Displacement

In line with the World Bank safeguard policy OP 4.12, the WAATP will avoid or minimize displacement through the following design procedures:

- To the extent possible, existing facilities of MAFFS and their collaborating Agencies on government lands will be selected for rehabilitation under the WAATP;
- Wherever inhabited dwellings may potentially be affected by a component of a WAATP activity or sub-project, an alternative site or land will be sought or the activity/sub-project shall be redesigned to avoid any impact on such dwellings and to avoid displacement/relocation accordingly;
- Wherever the impact on the land holding of one particular farmer or household is such that the mitigation measure to be applied may not be sustainable in the long term, the WAATP activity shall be redesigned or another farmer/house reconsidered to avoid any such impact;
- Minimization of land impact will be factored into site/demo farms and technology selection and design criteria;
- Costs associated with displacement and resettlement will be internalized into WAATP activity costs to allow for fair comparison of processes and sites;
- To the extent possible, demonstration farms and or project facilities will be located on lands with no structures;
- Land owners and farmers who have access to lands without encumbrances will be considered for use as demonstration farms; and



- Infrastructures required by the project will be sited on government lands which has not been encroached or private lands which the owner is willing to use to participate under the programme without compulsion.

5.1.3 Cut-off date

The objective of the cut-off date is to establish a deadline for which project affected persons qualify for entitlement to compensation. Persons entering the Project Area after the Cut-Off Date are not eligible for compensation and/or resettlement assistance.

In accordance with OP 4.12 and for each sub-project activities under the WAATP, a cut-off date will be determined, taking into account the likely implementation schedule of the sub-project to avoid potential rent-seeking or influx of people who may want to take advantage of the process. To ensure consistency between Sierra Leonean legal requirements and WB policies, the cut-off date should be the date of inventory of assets/properties.

In line with OP 4.12, the following three categories of affected people will be eligible to Project resettlement assistance:

- a) those who have formal legal rights to land (including customary and traditional rights [recognize ownership and use systems inherent in customary land tenure systems] recognized under the laws of the country);
- b) those who do not have formal legal rights to land at the time of the cut-off-date but have a claim to such land or assets-provided that such claims are recognized under the laws of Sierra Leone or become recognized through a process identified in the resettlement plan; and
- c) those who have no recognizable legal right or claim to the land they are occupying.

Persons covered under (a) and (b) above are provided compensation for loss of land and assets and other assistance as needed. Persons covered under (c) above are provided resettlement assistance in lieu of compensation for the land they occupy, and other assistance, as necessary, if they occupy the project area prior to the cut-off date. In practice this means that, people usually considered in Sierra Leone as “squatters” will be entitled to Project assistance as long as they are in occupation on the affected property before the cut-off date. However, persons who encroach on the area after the cut-off date are not entitled to compensation or any other form of resettlement assistance. All persons in the three categories above are provided compensation for loss of assets other than land (i.e. structures and crops).

5.1.4 Income and Livelihood Restoration

One paramount principle of World Bank safeguards is that where people are affected by land take, the aim of resettlement must be that they should be “no worse-off if not better off” after the resettlement has taken place. Where impact on land use is such that people may be affected in the sustainability of their livelihoods, preference will be given to land-for-land solutions rather than cash compensation, in consistency with the Constitution of Sierra Leone and with OP 4.12.

This applies to people who are not necessarily physically displaced but who are affected by a land loss that affects their sustainability. Where necessary, affected people will be monitored in the rehabilitation of their livelihood during, and after the transition period. Livelihood restoration measures will be assessed in relevant Resettlement Action Plans (RAPs) and Abbreviated Resettlement Action Plans (ARAPs) depending upon the specific situation of the considered location.



5.1.5 Compensation payment

Compensation principles will be as follows:

- Compensation shall be paid prior to physical and economic displacement / land entry; and
- Compensation will be at full replacement value using the current market value or above.

By contrast with the depreciated or net value of a structure, the “replacement value” includes the full cost of materials and labour required to reconstruct a building of similar surface and standing. In other words, the affected person must be able to have their structure rebuilt in a different location using the compensation paid for the old building.

5.1.6 Consultation – Grievance Mechanisms

The Sierra Leonean law requirements on consultation and information, as well as those related with grievance management, fall short of standards as set out in the WB policy requirements. The application of these will require:

- meaningful information and consultation to take place before the process leading to displacement is launched in each particular location concerned by a WAATP activity;
- a specific grievance registration and processing mechanism to be put in place; and
- Grievance redress Committees set up and operationalized in project impact areas.

5.2 Objectives of the Resettlement/Compensation Programme

The main objectives of the resettlement related/compensation programme are as follows:

- To minimize displacement and cash compensation as much as possible;
- To ensure that project affected people are consulted and their concerns included in the resettlement/compensation programme for implementation;
- To ensure that project affected people are adequately compensated for deprivation of use of land, loss of crops and structures (either farming or business/ residential structure or communal property);
- To compensate the affected units and enterprises for their loss at full replacement cost;
- To identify vulnerable groups including the elderly, physically challenged, women heads etc. among the project affected people and prescribe any special assistance they may require in terms of extra attention during the implementation of the programme; and
- To meet both national regulatory and WB requirements.

5.3 Resettlement Processes

5.3.1 Categorization of Project Activities with respect to Land Needs

As far as land needs and resettlement requirements are concerned, two different situations may be encountered in the course of the implementation of the WAATP:

- a. the project component has no land need other than already acquired State land. In such cases, documentation of resolution of previous disputes will be required before these are approved.
- b. the implementation of the project component (e.g. construction of new warehouses) may require land acquisition (e.g. involuntary land acquisition from individuals with freehold title and involuntary land acquisition from communities or encroached public lands).



In situation a) above, the fact that there is no land acquisition involved means that procedures required by the Sierra Leonean law do not need to be triggered. Proposed processes will therefore be consistent with WB requirements only. Situation b) is more complex because it implies that both Sierra Leonean procedures and WB requirements are to be followed.

5.3.2 Overview of the Resettlement Preparation Process

According to the World Bank Operational Policies on involuntary resettlement, preparation of a resettlement instrument is a condition for appraising projects involving involuntary resettlement. In case of programs/projects with sub-projects, the Bank requires that a satisfactory resettlement action plan (RAP) or an abbreviated resettlement plan (ARAP) that is consistent with the provisions of the policy framework be submitted to the Bank for approval before the sub-project is accepted for Bank financing (OP/BP 4.12)

The resettlement preparation process will begin with screening of WAATP subprojects/ activities to determine if there need for the preparation of any resettlement instrument (ARAP or RAP). A sample screening checklist for identify cases of involuntary resettlement is provided in **Appendix 1**. The proposed process for project component without land acquisition is summarized in **Figure 5.1**, and that for project component with land acquisition in **Figure 5.2**. The number of affected people will determine whether the process is to include the preparation of a full RAP or of an ARAP. The PCU will use the District Agricultural Offices of MAFFS to determine the number of affected persons/assets under any WAATP activity that is likely to generate resettlement related or compensation issue.

Resettlement Action Plan (RAP)

The RAP will be prepared where more than 200 individuals are physically or economically displaced. The tasks/ToR and content for the preparation of the RAP is given in **Appendix 2**. All RAPs will need World Bank approval prior to commencing resettlement activities. Resettlement activities must be completed before commencing civil works.

Abbreviated Resettlement Action Plan (ARAP)

The ARAP will be prepared where less than 200 individuals are physically or economically displaced or where the productive assets of affected persons is less than 10% of their assets. The tasks/ToR and content for the preparation of the ARAP is given in **Appendix 3**. All ARAPs will need World Bank approval prior to commencing resettlement activities. Resettlement activities must be completed before commencing WAATP activities on the fields or civil works on the ground.

Census of Affected Persons & Assets/ Socio-economic baseline census

Upon identification of the need for involuntary resettlement in a sub-project, the project will carry out a census to identify the persons who will be affected by the sub-project. This will help the project to determine who will be eligible for assistance early enough in the project cycle. It will also help to prevent an inflow of ineligible people living outside the sub-project area of impact but who might want to take advantage and claim for assistance. The completion of the census will mark the cut off-date for eligibility for compensation. **Appendix 4** shows a framework for the census of affected assets and people.

Consultations during resettlement action planning and implementation



Consultations with stakeholders including PAPs will be an integral part in the ARAP or RAP preparation, implementation and monitoring processes at all stages and stakeholders should have access to the ARAP/RAP. Consultations should happen in local language where possible; women should be consulted separately if that is more appropriate. The consultation process should ensure sizeable participation of women, youth, and groups at risk of exclusion, and also ensure prior distribution of project information in a form that is accessible to community members, etc.

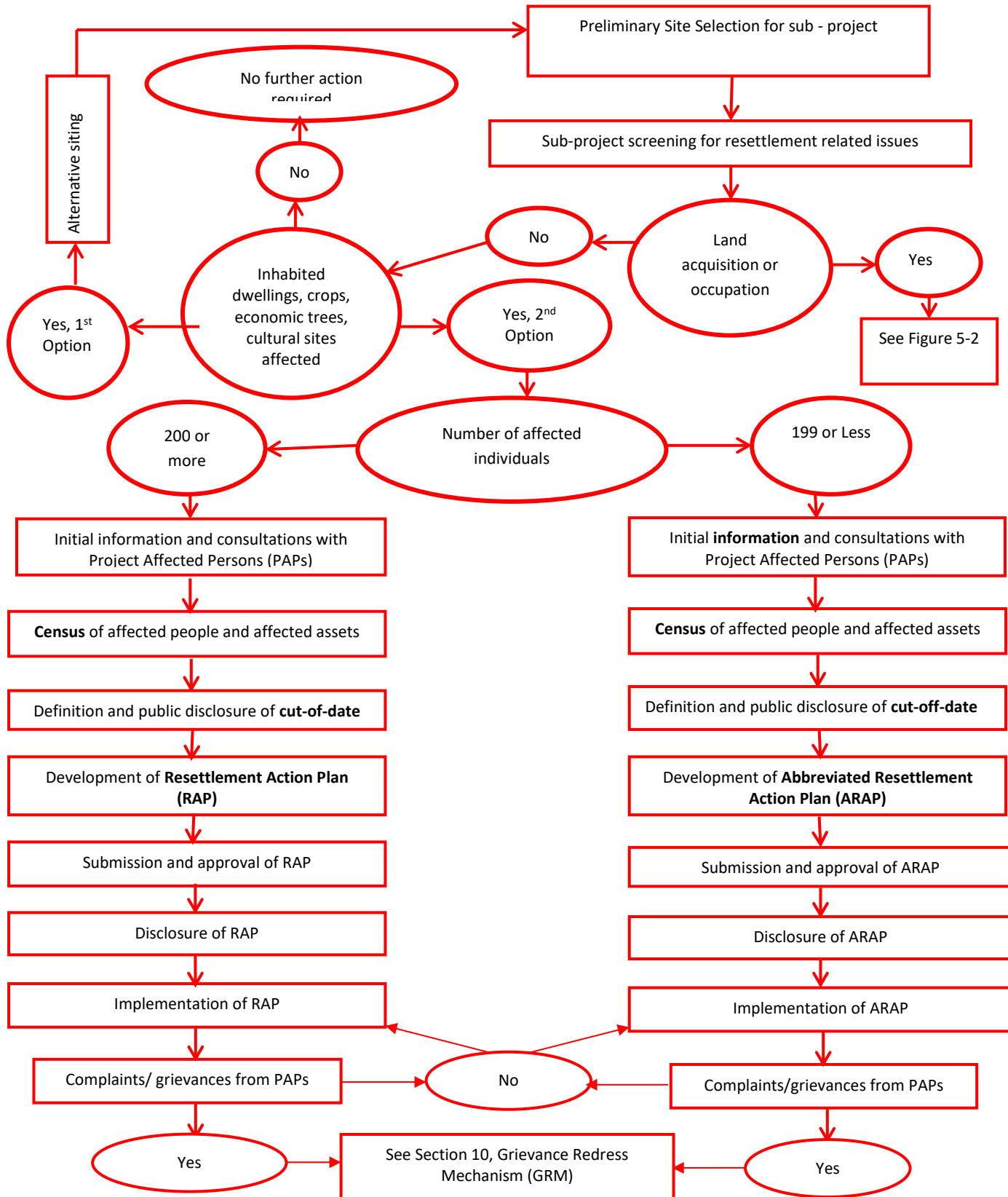


Figure 5-1: Proposed involuntary resettlement process for project/subproject without land acquisition

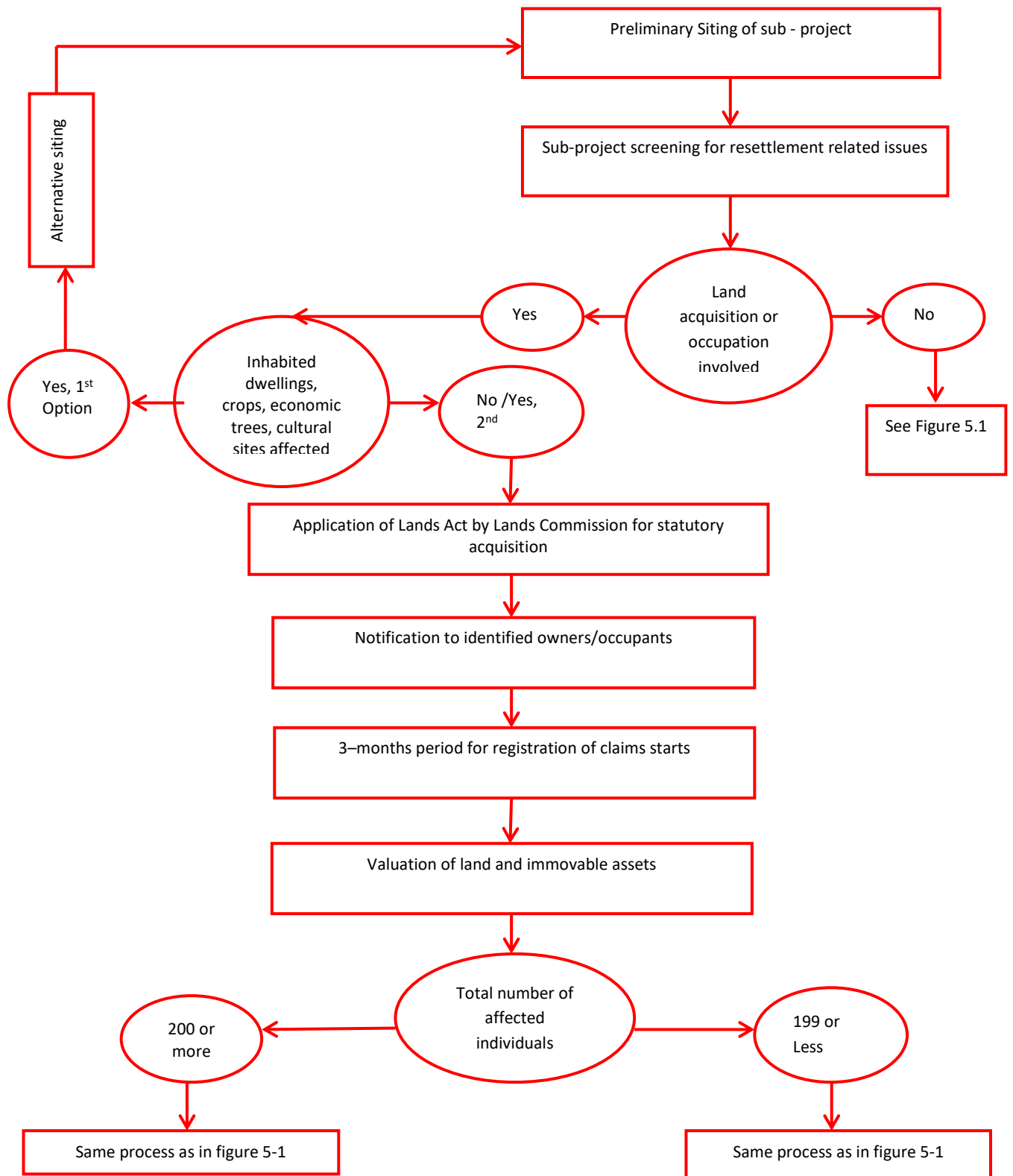


Figure 5-2 Proposed involuntary resettlement process for project/subproject with land acquisition



6.0 PROPERTY VALUATION AND COMPENSATION

6.1 Valuation of Properties

The purpose of the valuation will be to assess the overall Compensation Payable as part of the assessment of resettlement related issues under the WAATP. As the detailed WAATP activities are not too clear at this stage, the scope of the valuation covers land, structures and crops/economic trees on the project site to be affected and also unavailable to the owner for usage. Loss of income or disruptions to livelihoods are considered as far as it may be appropriate for payment of compensation for the period of disruption of farming /livelihood/business.

6.1.1 Basis of Valuation

The basis of the valuation is derived from the World Bank's Involuntary Resettlement Policy, OP 4.12; and the Constitution of Sierra Leone.

6.1.2 Valuation Methods and Compensation Rates

Table 6-1 provides the general guideline for cost preparation and method for valuing affected assets/properties taking. In this context, the compensation is the amount required, so far as money can do so, to put the owner or user of a land or building in the same position as if his/her use and enjoyment has not been disrupted. In other words, it is based on the principle of "Full Replacement Cost".

Land

The Market Comparison Approach (MCA) will be adopted for the valuation of land if there is a vibrant and active land market. This approach involves the direct comparison of the property's value determining features with those of the immediate and surrounding vicinity that sold recently. In applying this method, values of plots of land from the neighbourhood of the sites will be collected, compared, adjusted to take account of minor differences, and applied to arrive at the reported values. This is to ensure that the values obtained would be adequate to purchase alternative land or cash compensation for the affected owners. Alternatively, where there is no active land market the negotiation approach will be adopted. This is based on productive potential or agricultural or commercial land of equivalent size and location?

Structures

The full Replacement Cost Approach (RCA) will be adopted for the valuation of the structures. It involves finding the estimate of the gross replacement cost of a structure which is the estimated cost of constructing a substitute structure, having the same gross area as that existing, at prices current at the relevant date. For the purpose of this valuation, the affected assets/structures and development will not be depreciated in line with the World Bank requirements.

Crops/Economic Plants

The Enumeration Approach will be adopted for affected crops/economic trees under the project. The Enumeration Approach involves taking census of the affected crops (either by counting or area) and applying crop rates by the Ministry of Lands, Country Planning and Environment.

Updated valuation rates to be applied under the WAATP will ensure that the crop rates compensate for the labour and equipment invested in the crop cultivation as well as the replacement cost of crops lost to ensure that the rates are in harmony with the full replacement value requirements.



6.1.3 Valuation Responsibility

The Ministry of Land, Country Planning and Environment in consultation with the Office of Administration and Registrar General will be requested to value affected assets/properties based on the full replacement cost principle (which include transaction cost such as labour and transport cost). Certified private valuers may also be engaged where necessary especially involving private persons or if required to assist the process. These professional valuers to be used will be required to provide evidence where necessary that the rates applied are consistent with the “full replacement value” requirement.

6.2 Other Considerations into the Compensation Package

Livelihood Assistance/Loss of Income

The estimation for loss of income (referred to as livelihood assistance) for affected farmers/businesses will be generally based on the following factors:

- estimated income of farmers or daily sales of produce from farms or the business units; and
- estimated period of construction or WAATP activity which will disrupt farming or business or commercial activity.

Losses of income for farmers/businesses will be estimated from net monthly/annual profit of the farm/business verified by an assessment of visible stocks and activities.

Resettlement/Relocation Assistance

Where PAPs are to be physically displaced or relocated, resettlement assistance should be provided to take care of the transport cost of mobilising and moving the affected properties to a new location and an accommodation assistance where affected persons will have to rent accommodation at the initial stages.

Disturbance Allowance

Cost of disturbance is one of the components to be considered when determining compensation for PAPs (especially for affected structures, crops and livelihoods). The Consultant recommends the application of 10% of affected property value /compensation based on rates approved by the Ministry of Lands, Country Planning and Environment.

6.3 Types of Compensation

The types of compensation recommended for use in the implementation of the RPF include cash payment and in-kind compensation.

Cash payment: Cash payment compensation will be calculated and paid in Sierra Leonean Leones (SLL). Rates will be based on market value of land when known or estimated full replacement value of structures/crops.

b. In-kind compensation: In-kind compensation may include items such as land, buildings, building materials, seedlings, agricultural inputs, agricultural produce and financial credit for equipment etc.



6.4 Compensation Payment/Claim

Compensation will be paid prior to the affected person vacating the land or property. In cases where compensation will have to be paid in-kind, the project representative and the PAPs should confirm if such in-kind compensation has been received after releasing of land for project (e.g. release of land for demonstration plots and farmers field schools). In the event that, compensation is delayed, each eligible affected person will sign a compensation claim and commitment form (see **Appendix 5**) together with the authorised project representative in the presence of a witness. The compensation claim form will clarify mutual commitments as follows:

- On the project side: commitment to pay the agreed compensation, including all its components (value of affected property- cash or in-kind, disturbance, assistance to farmers to continue with farming occupation and or relocation/transportation assistance if any); and
- On the affected person's side: commitment to vacate or release the land by the agreed date.

Table 6-1: General guidelines and methods for costs preparation

Item	Types	Method
Land	Customary lands, private lands	Prevailing market value of the land to be acquired if there is a vibrant and active land market. Otherwise a negotiated price will be agreed including Land for land replacement
Structures	Any type of structure, e.g. mud houses, wooden structures, sandcrete block houses, etc	Full Replacement Cost method. No depreciation will be applied.
Crops/Plants	Food and cash crops/economic plants (cassava, maize, oil palm tree, cocoyam, plantain etc)	Enumeration approach and applying updated LVA rates. Crop rates will take care of labour and equipment invested in the crop cultivation as well as the replacement cost of crops lost
Cultural heritage resources	Sacred groves, cemeteries, shrines	<ol style="list-style-type: none"> 1. Option 1: Avoidance and an alternative site selected for project. 2. Option 2: Relocation of shrine if possible or performance of necessary rituals/pacifications in consultation with and acceptable to the traditional authorities or community leaders. 3. Option 3: Other options proposed by community/PAPs and agreed upon under the project including the Chance Find procedure provided in the ESMF.
Loss of income and livelihood	Farming, businesses etc.	Estimation of net monthly/annual profit for farm/business based on records; application of net monthly/annual profit to the period when farm/business is not operating. Livelihood Restoration Plan will be prepared
Disturbance allowance	-	10% of affected property value /compensation, based upon rates determined by the government agency for valuation.



7.0 ELIGIBILITY CRITERIA AND ENTITLEMENT MATRIX

Project affected persons are described as persons affected by land acquisition, land occupation, relocation, or loss of income associated with the acquisition of land and/or other assets. Based on an understanding of the social structure of the rural and urban communities and the nature of the WAATP activities, it is possible to suggest that the most likely project affected persons (PAPs) will comprise individuals, farmers, traditional authorities, communities and companies/organisations as a whole. **Table 7.1** presents the eligibility criteria and entitlement matrix for the general categories of impacts that could occur under the WAATP.



Table 7-1: Eligibility Criteria and Entitlements

Affected Assets	Type of impact	Entitled units	Eligibility criteria	Entitlement
Land	Permanent acquisition of land,	Landowner (individual, family, community/stool)	Owns the affected plot of land under Sierra Leonean laws including customary	1. Cash compensation for determined by prevailing market rates.
	Temporary occupation of land	Landowner (individual, family, community/stool)	Owns the affected plot of land under Sierra Leonean laws including customary	1. Compensation (in cash or kind) for the period of occupation as agreed among the parties via negotiation.
Crops (food/cash crops and economic trees inclusive)	Destruction of/ damage to standing crops	Owner or Farmer	Have grown the affected crop (regardless of related plot ownership)	1. Cash compensation for standing crops counted at valuation date and based upon updated Ministry of Land, Country Planning and Environment (MLCPE) rates, and 2. Disturbance allowance of 10% of (1) or at a rate determined by MLCPE.
Structures	Destruction of immovable structures	Owner	Owns affected structure	1. Compensation at full replacement cost of structure 2. Cost of moving (e.g. persons/ goods in the structure under or belonging to owner) 3. Disturbance allowance of 10% of (1) or at a rate determined by the MLCPE
		Occupant	Live in or use the affected structure on rental basis (Occupant different from owner)	1. Cost of renting similar structure (e.g. for 6 months duration) 2. Cost of moving out to new place 3. Disturbance allowance of 10% of (1) or at a rate determined by the LVA
	Relocation of movable structures	Owner	Owns the affected structure	1. Cost of moving affected structure to new site 2. Disturbance allowance of 10% of (1) or at a rate determined by the LVA
		Occupant	Use or occupies the affected structure	1. Cost of moving occupants to new site 2. Disturbance allowance of 10% of (1) or at a rate determined by the LVA [NB: if owner is same as



Affected Assets	Type of impact	Entitled units	Eligibility criteria	Entitlement
				occupant, he/she will not be entitled to this disturbance allowance].
Livelihoods	Agriculture - destruction of economic or cash crops	Farmer	Use affected land for farming as livelihood sources (emphasis on perennial crops. Annual crops can be harvested prior to land entry or destruction)	1. Cash compensation for any temporary loss of income or livelihood incurred as a result of the project during the transition period (period required to re-establish farm elsewhere).
	Businesses	Business person (may be distinct from owner of structure where business takes place)	Operate a business on Project affected land, regardless of the land ownership situation (includes squatters)	1. Cash compensation of temporary loss of income or livelihood incurred because of the Project during the period required to re-establish the business to pre-Project conditions
	Use of communal resources such as livestock grazing grounds, (or involuntary restrictions to community assets)	User of such resources (can be individuals or communities)	Use communal resources as an element of livelihood	1. Assistance in identifying and accessing similar resources elsewhere 2. Cash compensation of temporary loss of income incurred because of the Project during the period required to access similar resources elsewhere/period required to provide alternative livelihood assistance
Cultural heritage resource (e.g. sacred site).	Relocation of or removal of cultural heritage resource located on project site	Owner (individual or community)	Use or pay homage to cultural heritage resource/ sacred site	Negotiate with owner or community with regard to rites to be performed to ensure successful relocation or removal of cultural resource/ sacred site in accordance with Chance Find procedures prescribed under the ESMF.



8.0 GRIEVANCE REDRESS MECHANISM

Grievance Redress Mechanism (GRM) involves the institutions, instruments, methods, and processes by which a resolution to a grievance is sought and provided. The consultations of project affected persons and other key stakeholders at the very early stages of project implementation will ensure that their concerns are taken care of during implementation and would help minimize disputes or conflicts arising from implementation of any project activity.

8.1 Objective

The objectives of the grievance process are to

- Provide affected people with avenues for making a complaint or resolving any dispute that may arise during the course of the implementation and determination of entitlements of compensation and implementation of the project;
- Ensure that appropriate and mutually acceptable redress actions are identified and implemented to the satisfaction of complainants; and
- Avoid the need to resort to judicial proceedings.

Court cases are known to be cumbersome and time consuming. It is therefore proposed to make available a simple procedure for affected persons to be able to follow easily, and which will provide aggrieved people with an avenue for amicable settlement. Aggrieved people would however remain free to open a Court case without having registered their grievance as made possible by the Sierra Leonean law.

8.2 Potential sources of grievances/disputes

In practice, grievances and disputes that arise during the course of implementation of a resettlement/compensation program may be related to the following issues among others:

- Siting of the project/subproject;
- Mistakes in inventorying or valuing properties;
- Disagreement on property boundaries, either between the affected person and the expropriation agency or between two neighbours;
- Disputed ownership of a given asset (two or more affected people claim that the affected asset is theirs);
- Disagreement on asset valuation methods and compensation amounts in cash or in-kind;
- Successions, divorces, and other family issues resulting in disputed ownership or disputed shares between inheritors or family members;
- Disagreement with the computation of the resettlement or livelihood assistance or transportation cost;
- Claims by people who relocated on their own after receiving notification from the respective Districts about the project and the likelihood of impact on their activities; and
- Delays in resolving complaints of PAPs.



8.3 The Grievance Redress Process

The general steps of the grievance process comprise:

- Registration/receipt of Complaints;
- Determining and Implementing the Redress Action;
- Verifying the Redress Action;
- Monitoring and Evaluation; and
- Dissatisfaction and Alternative Actions.

8.3.1 Registration/Receipts of complaints

PCU will establish a register of resettlement/compensation related grievances and disputes. The receipt of complaints will include its logging and registration as this will help with monitoring the status of the grievances and ease reporting on them. The existence and conditions of access to this register (where, when, how) will be widely disseminated within the project community/town as part of the consultation undertaken for the project in general.

It is proposed that complaints be lodged verbally or in writing to the District Agricultural Office representative designated to receive all complaints. The Ward Committee for the project area could also receive complaints from PAPs (because the Ward Committee is within the community and is closer to the PAPs and some PAPs may prefer to route their complaints through the Committee and avoid undue transport and time cost to the District Agricultural office). The Committee will ensure that such complaints reach the District Agricultural Office representative designated to receive complaints within 24 hours via phone call or through any other means. The District Agricultural Officer shall receive all complaints and shall officially register these complaints using the first section of the proposed complaint registration and resolution form (*WAATP Form CRRF1*) provided in **Annex 6**. The District Agricultural Office representative will inform the team leader for the Grievance Redress Team within 24 hours on any complaint lodged.

8.3.2 Determining and implementing the redress action

When a grievance/dispute is recorded as per above-mentioned registration procedures, the Grievance Redress Team (GRT) will be called into action, and mediation meetings will be organized with interested parties. Minutes of meetings will be recorded.

The GRT will first investigate the foundation of the grievance and then determine the redress action in consultation with the complainant and concerned party if necessary. Otherwise, the grievance redress team will communicate to the complainant on the acknowledgement of the grievance, the redress action proposed and the timeframe for implementation.

The proposed redress action and the timeframe in which it is to be implemented will be discussed within 5 working days of receipt/registration of the grievance. The grievance issue should be resolved within 10 working days of receipt of complaints.

8.3.3 Verifying the redress action

The grievance redress team will visit the affected property site or get in touch with the complainant to confirm that the redress action is carried out. If the complainant is dissatisfied with the outcome of the



redress proposal or action, additional steps may be taken to resolve the issue or reach an amicable agreement. Verification should be completed within one week of execution of the redress action.

8.3.4 Monitoring and Evaluation

The Monitoring and Evaluation Team will monitor the activities of the Grievance Redress Team to ensure that complaints and grievances lodged by PAPs are followed-up and resolved amicably as much as possible.

8.3.5 Dissatisfaction and Additional Steps

2nd Tier Amicable Mediation and Settlement

If the complainant is not satisfied with the decision of the grievance redress team, he/she can bring it to the attention of the Research Coordinator/ MAFFS safeguards focal persons or the Safeguard Officer for PCU to draw the attention of PCU to the unresolved grievance. Otherwise the GRT should forward the issue directly to PCU for further action. The PCU in consultation with the Research Coordinator/ MAFFS safeguards focal persons will set up an appropriate mediation team to resolve the issue within 2 weeks from the date of receipt of such a decision by PCU. If such a time line is not possible, the PCU should inform the GRT and the complainant accordingly giving reasons and possible new date.

Appeal to Court

If the complainant remains dissatisfied with the mediation effort of WAATP PCU and the Research Coordinator/ MAFFS safeguards focal persons, the complainant has the option to pursue appropriate recourse via judicial process in Sierra Leone. The Constitution allows any aggrieved person the right of access to Court of law. Courts of law will be a “last resort” option, in view of the above mechanism.

8.4 Membership, Function and Financing of the GRT

The Grievance Redress Team (GRT) will include the following:

- A representative from the District MAFFs office (Extension Division);
- Representative of the relevant District Council;
- Representative of the Ward Committee for the project area; and
- Representative of the traditional authority.

The district MAFFs and the District Council should ensure that at least one of the GRT members is a woman. In addition to the main function of resolving grievances, disputes, complaints and conflicts, the GRT will also

- i. ensure smooth implementation of the resettlement instrument;
- ii. establish dialogue with the PAPs; and
- iii. ensure that their concerns and suggestions are incorporated and implemented during the project.

It is important that the grievance redress teams be made known or be set up as soon as land acquisition or resettlement plan preparation starts. Disputes can arise from census operations and preliminary siting of subprojects and it is therefore important that the mediation mechanisms be available to cater for claim, disputes and grievances at the early stage. The activities of the GRT will be financed by PCU.



8.5 Schedule Template for Grievance Redress and Institutional Responsibilities.

The table below presents a summary of the grievance redress procedure with institutional roles and responsibilities.

Table 8-1: Schedule template for Grievance Redress

Steps	Process	Description	Time frame
1.	Grievance receipt and registration/ logging	-Face to face; phone; letter, recorded during public/ community meetings; recorded from Ward Committee, etc. -Significance assessed and grievance recorded or logged using the model complaint form and filed.	1-2 Days
2.	Development and implementation of response	-GRT meets or takes a decision on the grievance -Grievance assigned to appropriate party for resolution if necessary -Response development with input from relevant stakeholders -Redress response/action approved by GRT and logged -Redress response/update of progress on resolution communicated to the complainant -Start implementing redress action	5- 10 Days
3	Verifying the implementation of redress action	-Redress action implemented and verified by GRT. -GRT satisfied with implementation of redress action	10-15 Days
4	Close grievance or refer grievance to 2 nd tier resolution	-Completion of redress action recorded or logged -Confirm with complainant that grievance can be closed or determine what follow up is necessary -Record final sign off of grievance If grievance cannot be closed, return to step 2 or recommend 2 nd level settlement	15-25 Days
5	Court of law	-if 2 nd level settlement does not address dispute, complainant can resort to court of law	Unknown
6	Monitoring and evaluation, and reporting	Grievance Redress Mechanism Process is documented and monitored	-



9.0 CONSULTATIONS AND DISCLOSURE

9.1 Stakeholder Consultations Carried Out

The Consultant extensively engaged key stakeholders, as identified in the Country Proposal Paper (January 2018), between 20 February and 24 February 2018, to be apprised of the key resettlement issues that may arise from the implementation of the WAATP, as well as gain an insight into the legal and institutional framework available to support its implementation.

Key stakeholders consulted are categorised as project implementers, beneficiaries and Non-governmental organisations as described below:

Project Implementers

1. Ministry of Agriculture, Forestry and Food Security (MAFFS)
 - a. Extension Services, Head Office
 - b. Crops Services, Head Office
 - c. Gender in Agriculture and Nutrition, Head Office
 - d. NGO Desk, Head Office
 - e. Bombali District Crops Division, Makeni;
2. Sierra Leone Agricultural Research Institute (SLARI), Freetown;
3. Sierra Leone Chamber for Agribusiness Development (SLeCAD), Freetown;
4. National Federation of Farmers in Sierra Leone (NAFFSL), Freetown;
5. Sierra Leone Women Farmers Forum, Freetown.

Project Beneficiaries

6. Farmers (Including women and youth farmers)
 - a. Koya Rural District, Kwama Community;
 - b. Bombali District, Makeni.

Non-Governmental Organisations

7. Inter Aide;
8. Samako Agricultural Project;
9. Wipe Our Tears;
10. Farmers Network;
11. CNC Watch New Africa Women; and
12. Children's Foundation of Sierra Leone.

Stakeholder consultation or engagement is a process and WAATP PCU will continue with the engagement throughout the project implementation phase in collaboration with MAFFS (District/National Offices) as well as other state and non-state institutions such as the Sierra Leone Agricultural Research Institute (SLARI) and Farmer Organisation such as National Federation of Farmers in Sierra Leone (NAFFSL), National farmer's Cooperative Union of Sierra Leone (NaFCU), Women's Cooperative and the Sierra Leone Women Farmers Forum (SLeWoFF). The outcome of the consultations is provided as **Appendix 7**.



9.2 Consultation and Disclosure Requirements for the Resettlement Policy Framework

The resettlement instrument will be disclosed in compliance with World Bank operational policy, OP 4.12, which states that:

"As a condition of appraisal of projects involving resettlement, the borrower provides the Bank with the relevant draft resettlement instrument which conforms to this policy, and makes it available at a place accessible to displaced persons and local NGOs, in a form, manner, and language that are understandable to them. Once the Bank accepts this instrument as providing an adequate basis for project appraisal, it will be public disclosed across country and copies also deposited at selected locations for accessibility. The approved document will also be disclosed on the website of the World Bank. ."

The consultations and Public Disclosure will be undertaken by the PCU of WAATP and will be organized as follows:

- Circulation of the draft RPF for comments to all relevant institutions (e.g. PCU, relevant MAFFS directorates involved with the WAATP, SLARI, Ministry Of Land, Country Planning And Environment (MLCPE), Office of Administration and Registrar General (OARG), Environmental Protection Agency, and the World Bank;
- Communication of comments to the Consultant for incorporation into a final RPF, together with World Bank comments; and
- Public Disclosure of final RPF (after reviewed and cleared by both GoSL & World Bank) both in-country (e.g. relevant District Councils, District/National MAFFS offices, District EPA offices, project communities, community libraries) and at the World Bank and MAFFS websites.

9.3 Public Consultation Strategy

Stakeholder participation during project planning, design and implementation is widely recognized as an integral part of environmental and social management for projects. It is a two-way flow of information and dialogue between project proponents and stakeholders, which is specifically aimed at developing ideas that can help shape project design, resolve conflicts at an early stage, assist in implementing solutions and monitor ongoing activities.

Public consultation and participation will afford the PAPs an opportunity to contribute to both the design and implementation of the activities related to the sub-projects. In so doing, the likelihood for conflicts between the affected person and the project implementers will be reduced. In recognition of this, particular attention shall be paid to public consultation with any PAPs, households and homesteads (including host communities/institutions) when resettlement and compensation concerns are involved.

As a matter of strategy, public consultation shall be an on-going activity taking place throughout the entire project cycle. Hence, public consultation shall take place at the following stages as described in **Table 9-1**: project inception and planning, screening process, feasibility study, preparation of project designs, resettlement and compensation planning, implementation of RAP/ARAP (drafting and reading/signing of the compensation contracts, payment of compensations, resettlement activities), and implementation of after-project community support activities.



Table 9-1: Stakeholder engagement strategy

No.	Activity	Identified Stakeholders	Focus of Consultation/ Engagement	Timelines/ Frequency	Forms of communication	Facilitator
1.	Preparation of RPF/ project design and planning	<ul style="list-style-type: none"> MAFFS (Head Office and District) CORAF WAATP Project Coordination Unit (PCU) SLARI RARC TLRC NaFFSL SLeWoFF SLeCAD SLeSCA Farmers 	<ul style="list-style-type: none"> Scope of activities proposed for sub-components. Institutional arrangements for project implementation (including roles and responsibilities) Confirmation of project stakeholders (including beneficiaries). Identification of activities from sub-components with potential resettlement related issues of concern. Potential resettlement related issues of concern from implementation the proposed projects and sub-projects Compliance with World Bank, EPA and Lands Commission requirements for project sub-components Strategies for mitigating the potential impacts and implementation of RAP/ARAP 	Throughout the RPF study period/ project inception and planning	<ul style="list-style-type: none"> One on one Interviews Local meetings Focus group meetings Field visits Sharing and review of relevant reports Email and phone calls 	<ul style="list-style-type: none"> PCU (Project Coordinator and Safeguards Specialist) Resettlement Consultant
2.	Screening process	<ul style="list-style-type: none"> MAFFS (Head Office and District) CORAF WAATP Project Coordination Unit (PCU) SLARI RARC TLRC NaFFSL SLeWoFF SLeCAD SLeSCA Farmers 	<ul style="list-style-type: none"> Confirmation of scope of activities proposed for sub-components. Confirmation of institutional arrangements for project implementation (including roles and responsibilities) Confirmation of project stakeholders (including beneficiaries). Confirmation of activities from sub-components with potential resettlement related issues of concern. Potential resettlement related issues of concern from implementation the proposed projects and sub-projects 	Throughout the screening study period	<ul style="list-style-type: none"> One on one Interviews Local meetings Focus group meetings Field visits Sharing and review of relevant reports Email and phone calls 	<ul style="list-style-type: none"> PCU (Project Coordinator and Safeguards Specialist) Resettlement Consultant



No.	Activity	Identified Stakeholders	Focus of Consultation/ Engagement	Timelines/ Frequency	Forms of communication	Facilitator
			<ul style="list-style-type: none"> Confirmation of number of project affected persons (PAPs) and determination of the extent of resettlement planning. Compliance with World Bank, EPA and Lands Commission requirements for project sub-components Strategies for mitigating the potential impacts and implementation of RAP/ARAP 			
3.	Technical and financial feasibility study/ Preparation of project designs for sub-projects	<ul style="list-style-type: none"> District Agricultural Officers NaFFSL SLeWoFF SLeCAD SLeSCA Farmers District Councils Traditional Authorities Ward Committees PAPs 	<ul style="list-style-type: none"> Confirmation of scope of activities proposed for sub-components. Confirmation of institutional arrangements for project implementation (including roles and responsibilities) Confirmation of project stakeholders (including beneficiaries). Confirmation of activities from sub-components with potential resettlement related issues of concern. Potential resettlement related issues of concern from implementation the proposed projects and sub-projects Confirmation of number of project affected persons (PAPs) and determination of the extent of resettlement planning. Compliance with World Bank, EPA and Lands Commission requirements for project sub-components Strategies for implementation of RAP/ARAP Integration of RAP/ARAP into project scheduling. 	Throughout the design and feasibility period	<ul style="list-style-type: none"> One on one Interviews General meeting/ possible door to door sensitization. Focus group meetings Field visits Sharing and review of relevant reports Email and phone calls 	<ul style="list-style-type: none"> CORAF PCU (Project Coordinator and Safeguards Specialists) SLARI RARC TLRC Consultants
4.	Resettlement and compensation planning	<ul style="list-style-type: none"> PAPs NaFFSL SLeWoFF District Councils 	<ul style="list-style-type: none"> List of PAPs Eligibility for compensation and entitlement Schedule and procedures for resettlement and compensation payment 	Prior to commencement of works	<ul style="list-style-type: none"> One on one Interviews General meeting/ 	<ul style="list-style-type: none"> CORAF PCU (Project Coordinator and



No.	Activity	Identified Stakeholders	Focus of Consultation/ Engagement	Timelines/ Frequency	Forms of communication	Facilitator
		<ul style="list-style-type: none"> Traditional Authorities Ward Committees 	<ul style="list-style-type: none"> Institutional arrangement for RAP/ARAP implementation Grievance redress mechanism Community awareness creation, notifications and support in the inventory of affected persons and compensation related issues. Capacity building for stakeholders for the implementation of the RAP/ARAP 		<ul style="list-style-type: none"> possible door to door sensitization. Radio discussion Sharing and review of relevant reports Newspaper publications 	<ul style="list-style-type: none"> Safeguards Specialists) SLARI DAO MLCPE EPA Consultants/ NGOs
5.	Implementation of RAP/ARAP	<ul style="list-style-type: none"> PAPs NaFFSL SLeWoFF District Councils Traditional Authorities Ward Committees 	<ul style="list-style-type: none"> List of PAPs Eligibility for compensation and entitlement Schedule and procedures for resettlement and compensation payment Institutional arrangement for RAP/ARAP implementation Grievance redress mechanism Community awareness creation, notifications and support in the inventory of affected persons and compensation related issues. Capacity building for stakeholders for the implementation of the RAP/ARAP 	Prior to commencement of works	<ul style="list-style-type: none"> One on one Interviews General meeting/ possible door to door sensitization. Complaints desk Sharing and review of relevant reports Newspaper publications Radio discussion 	<ul style="list-style-type: none"> CORAF PCU (Project Coordinator and Safeguards Specialists) SLARI DAO LVA EPA Consultants/ NGOs
6.	Implementation of after-project community support activities (including monitoring)	<ul style="list-style-type: none"> PAPs District Councils Traditional Authorities Ward Committees 	<ul style="list-style-type: none"> Institutional arrangement for RAP/ARAP implementation Grievance redress mechanism Capacity building for stakeholders for the implementation of the RAP/ARAP 	Project implementation period	<ul style="list-style-type: none"> General meeting. Workshops Complaints desk Sharing and review of relevant reports 	<ul style="list-style-type: none"> CORAF PCU (Project Coordinator and Safeguards Specialists) DAO EPA Consultants/ NGOs



10.0 VULNERABLE GROUP CONSIDERATION

10.1 Identification of Vulnerable Groups

Vulnerable groups are those at risk due to the displacement, compensation, and resettlement process. Vulnerable persons need to be ascertained in the preparation of the Resettlement Action Plan (RAP) or Abbreviated Resettlement Plan (ARAP) when project scope and activities are properly identified and confirmed. Vulnerable people to be considered under the WAATP include:

- The elderly, usually from 70 years and above;
- Widows;
- Women and children;
- Physically challenged persons;
- Mentally challenged/highly depressed persons;
- Affected Persons who are too ill, bedridden, hospitalized or stricken with HIV/AIDS;
- Unemployed youth;
- Female heads of households; and
- Migrant/settler farmers without proper land documents.

10.2 Assistance to Vulnerable People

Assistance to vulnerable persons may take various forms and may also depend upon vulnerable persons' requests and needs. Assistance to vulnerable people may include but not limited to the following:

- Assistance in financial literacy training especially for women and assistance in compensation payment procedures (e.g. going to the bank with them to cash the compensation cheque);
- Assistance in the post payment period to secure the compensation money and reduce risks of misuse/robbery;
- Assistance in moving: providing vehicle, driver and assistance at the moving stage;
- In kind compensation payment,
- Vulnerable farmers making available land as demonstration farms should also be assisted with initial clearance of their alternative farmlands similar in size to the land released for demonstration purposes
- Assistance to migrant/settler farmers without proper land documents in finding alternative sites for farming;
- Assistance in building: providing materials, workforce, or building houses; and
- Health care if required at critical periods: moving and transition period.

10.3 Provisions to be made in RAPs/ARPs

Vulnerable people will be identified at census stage. Each RAP or ARAP developed under the WAATP if any should make precise provisions with respect to assistance to vulnerable groups. Identification of vulnerable people and identification of the cause and impacts of their vulnerability, either through direct interviews by the RAP/ARAP consultant or the District Agricultural Officers (Extension Officers) at the



project inception stage or RAP/ARAP stage is critical because often vulnerable people do not participate in community meetings, and their disability/vulnerability may remain unknown. Local community leadership should be involved in the determination of who is vulnerable and by what criteria



11.0 MONITORING AND EVALUATION

11.1 Objectives of Monitoring and Evaluation

Monitoring and Evaluation are key components of the RPF. The general objectives are:

- Screening and identifying subproject activities that require the preparation of an ARAP or RAP;
- Monitoring of specific situations or difficulties arising from implementation, and of the compliance with the objectives of the RPF and methods as set out in this RPF;
- Evaluation of the impacts of the Resettlement/Compensation Actions on PAPs' livelihood, environment, local capacities, on economic development and local communities.

Monitoring aims to correct implementation methods during the course of the project, as required, while evaluation is intended at checking whether policies have been complied with and providing lessons learnt for amending strategies and implementation in a longer-term perspective.

11.2 Internal Monitoring

11.2.1 Scope and Content

Monitoring will address the following aspects:

- Social and economic monitoring:
 - status of displaced or affected persons,
 - status of farmers/individuals benefitting from the WAATP activities,
 - re-establishment of livelihoods of affected farmers/persons;
- Technical monitoring: supervision of infrastructure and housing construction where relevant;
- Grievances and grievance management system;
- Implementation of consultation strategy; and
- Assistance in livelihood restoration: agriculture/farming and business re-establishment and assistance.

11.2.2 Monitoring indicators

The PCU Safeguards Specialists, in collaboration with the Research Coordinator for SLARI/ MAFFS safeguards focal persons, through its Extension Division and Planning, Evaluation, Monitoring and Statistics Division (PEMSD), and will keep the following statistics on an annual basis:

- Number of subprojects screened on environmental and social safeguard grounds.
- Number of subprojects with RAPs or ARPs;
- Number of RAPs or ARPs implemented according to schedule;
- Number/frequency of safeguard supervision and annual Project reviews undertaken.
- Numbers of farmers/ households/individuals affected by the WAATP Project activities;
- Number of farmers/individuals physically or economically displaced;
- Numbers of farmers/households/individuals benefitting from the WAATP activities;
- Number of women benefitting from the WAATP activities;
- Number of youth (between the ages of 15 and 35 years) benefitting from the WAATP activities;
- Number and sizes of individual, family or stool lands acquired for the WAATP activities;
- Amounts of compensation paid; and
- Number of grievances registered and number resolved.



Reporting

The internal monitoring unit (comprising of the Safeguards Specialist and the project M&E Officer) will submit quarterly reports or as agreed to PCU. The report will at least cover status of compensation disbursement, nature of complaints, redress actions and follow-ups. An annual monitoring report will also be developed internally based on periodic reports.

11.3 Internal Evaluation

11.3.1 Evaluation objectives

Reference documentation for the evaluation will be the following:

- This Resettlement Policy Framework;
- The Sierra Leonean laws and regulations as described in this RPF;
- The applicable World Bank Safeguard Policies, i.e. OP 4.12 “Involuntary Resettlement”; and
- Any ARAP or RAP prepared for the WAATP activities if any.

The evaluation has the following specific objectives:

- General assessment of the compliance of the implementation of resettlement activities with objectives and methods as set out in this RPF;
- Assessment of the compliance of the implementation of resettlement activities with laws, regulations and safeguard policies as stated above;
- Assessment of resettlement and compensation procedures as they have been implemented;
- Evaluation of the impact of the resettlement and compensation programs on incomes and standard of living, with focus on the “no worse-off if not better-off” requirement;
- Identification of actions to take as part of the on-going monitoring to improve the positive impacts of the programme and mitigate its possible negative impacts, if any.

Evaluation of resettlement and compensation activities will be part of general assessment and review activities undertaken for the WAATP activities as a whole by the PCU. Internal evaluation arrangements will be carried out for the implementation of ARAPs/RAPs.

11.4 External Monitoring and Evaluation

The supervision of safeguards implementation for the Project will be done by CORAF as part of the overall project implementation in conjunction with the Social and Environmental Safeguards Specialists at the PCU, and relevant experts involved in environmental and social mitigation. World Bank supervision teams will also include environmental and social safeguards experts on the team.

It is recommended that the PCU engages a local consultant to carry out external monitoring and evaluation of the RPF or any RAP/ARAP developed and implemented under the WAATP. The Independent External Evaluation (IEE) will be done soon after the completion of an ARAP or RAP implementation and reported. The independent evaluation will determine:



- If compensation payments have been completed in a satisfactory manner;
- If there are improvements in livelihoods and well-being of PAPs; and
- If grievances or conflicts emanating from the WAATP have been successfully resolved.

Several indicators will be used to measure these impacts. These include, among others,

- (i) a comparison of income levels of PAPS before-and-after the RPF and or ARAP/RAP implementation;
- (ii) comparison of income levels of farmers/individuals benefitting from the WAATP;
- (iii) Livelihoods and employment assistance offered under the WAATP and other accessible alternative incomes;
- (iv) changes in standards of living/housing conditions of PAPs;
- (v) number of grievances and their status, time and quality of resolution;
- (vi) number of vulnerable people/groups identified and assisted and impact of resettlement assistance provided on them;
- (vii) number of demolitions if any after giving notice if any, and
- (viii) number of PAPs paid in a given period in comparison with what was planned.

11.5 Completion Audit

Upon completion of RAP/ARAP implementation, an assessment will be conducted to determine whether the objectives of the resettlement instrument have been achieved. Evaluation is intended at checking whether policies have been complied with and providing lessons learnt for amending strategies and implementation in a longer-term perspective. The completion audit will allow the PCU, and other relevant stakeholders including SLARI and other divisions of MAFFS (Crops Services, Livestock, Agricultural Extension, PEMSD), EPA to verify that all resettlement/compensation related measures identified in the RPF and any RAP/ARAP developed for that purpose were implemented or otherwise, and that compensation programmes have been completed in compliance with OP 4.12.

The audit will also evaluate and ensure that the actions prescribed in the RPF and any RAP/ ARAP and implemented had the desired effect. The PCU may engage a local consultant to carry out the completion audit. The completion audit is to be undertaken after completing implementation of the RAP/ARAP.



12.0 INSTITUTIONAL ARRANGEMENTS FOR IMPLEMENTATION OF THE RPF

12.1 Institutional Responsibilities

The main institutions involved with the implementation of the compensation/resettlement related activities are:

- Ministry of Agriculture, Forestry, and Food Security (MAFFS);
- Project Coordination Unit (PCU);
- SLARI;
- Farmer Organisations (NAFFSL, NaFCU, Women’s Cooperative and SLeWoFF)
- Lands Valuation Authority of the Lands Commission;
- Environmental Protection Agency (EPA);
- District Councils/Traditional Authorities/Ward Committees; and
- CORAF.

The implementation activities will be under the overall guidance of the PCU. The responsibilities of the various institutions are presented in the table below.

Table 12-1: Institutional framework

No.	Institution	Responsibility
1.0	Project Coordinating Unit	<ul style="list-style-type: none"> • Overall supervision of the RPF. • Trigger the process through screening and inventory of affected persons and assets and implement plan.
2.0	MAFFS – District Agricultural Offices	<ul style="list-style-type: none"> • Assist with screening of subprojects and initial identification of PAPs • To assist with compensation negotiations (in kind) where necessary • To assist in grievance redress matters
3.0	Environmental Protection Agency (EPA)	<ul style="list-style-type: none"> • Review screening reports and advise on level of environmental assessment if necessary • Assist with training and capacity building of other institutions
4.0	Ministry of Land, Country Planning and Environment (MLCPE)/ Office of Administration and Registrar General (OARG)	<ul style="list-style-type: none"> • To undertake the valuation of affected properties and compensation due PAPs.
5.0	District Council, Traditional authorities, Ward Committees	<ul style="list-style-type: none"> • To assist with community awareness creation, notifications and support in the inventory of affected persons and compensation related issues. • To assist in grievance redress matters
6.0	Consultants/NGO	<ul style="list-style-type: none"> • Prepare ARAP/RAP if necessary and assist with implementation and capacity building.



7.0	CORAF	<ul style="list-style-type: none">• To coordinate the Program at Regional level• To supervision of safeguards implementation• To prepare and update detailed reports on the implementation of the RAP/ARPs before Bank supervision missions
-----	-------	---

The Ministry of Agriculture, Forestry, and Food Security (MAFFS) has the overall responsibility for preparing the RPF and implementing same with World Bank approval. It will ensure that all compensation and resettlement related matters are carried out satisfactorily before the disbursement of funds for the project and rehabilitation/construction works commences.

The District Councils will facilitate community orientation to fully understand and appreciate the processes and assist in implementation. Much of the work will be done at the district level, and the Ward Committees being the local administrative authority with the support from MAFFS will further ensure that:

- Communities are properly and adequately informed (timely) by the TAs of the Plans, and also their rights and options relating to their properties that may be affected by the project and the compensation issues if any.
- Activities between different communities implementing the resettlement or compensation related plans are properly coordinated.
- Any grievances submitted by the affected persons are attended to as appropriate.
- Provide regular updates about project implementation through periodic reports.

12.2 Resources, Technical Support and Capacity Enhancement

12.2.1 Resources available to deal with resettlement issues

The PCU has limited human resources available to deal with WAATP issues in general and resettlement/compensation related issues in particular. As a result, an additional Safeguards Specialist will be engaged as part of the Project Coordination Unit, with allocated resources to manage, monitor and report environmental and social risks and impacts. In addition, the WAAPP Project Coordination Unit will involve the Research Coordinator for SLARI and Safeguards Focal Persons at MAFFS where the projects will be undertaken as well as the District EPA to provide support to the Safeguards team towards the implementation of the RPF. The suggested organogram for the implementation of the RPF is provided in **Figure 12.1**.

12.2.2 Technical support and capacity building

Compliance with World Bank policies needs some capacity building at the levels of both Project management (Project Coordination Unit) and Project implementers at the national and district level (District Agricultural Offices of MAFFS). A training workshop is proposed as part of this RPF.

12.3 Priority Tasks

As soon as WAATP sub-projects or activities and locations are determined in sufficient detail, preliminary screening of resettlement/ compensation related issues should be carried out to confirm (i) if land



acquisition is involved, (ii) if implementation of subproject activities will impact on livelihoods and assets (structures, crops/economic plants and cultural heritage resources) of people and (iii) if implementation of subproject activities will also cause physical or economic displacement of people. If any of these is triggered, then the number of affected people should be estimated to confirm which category of resettlement instrument (ARAP/RAP) to be prepared for implementation.

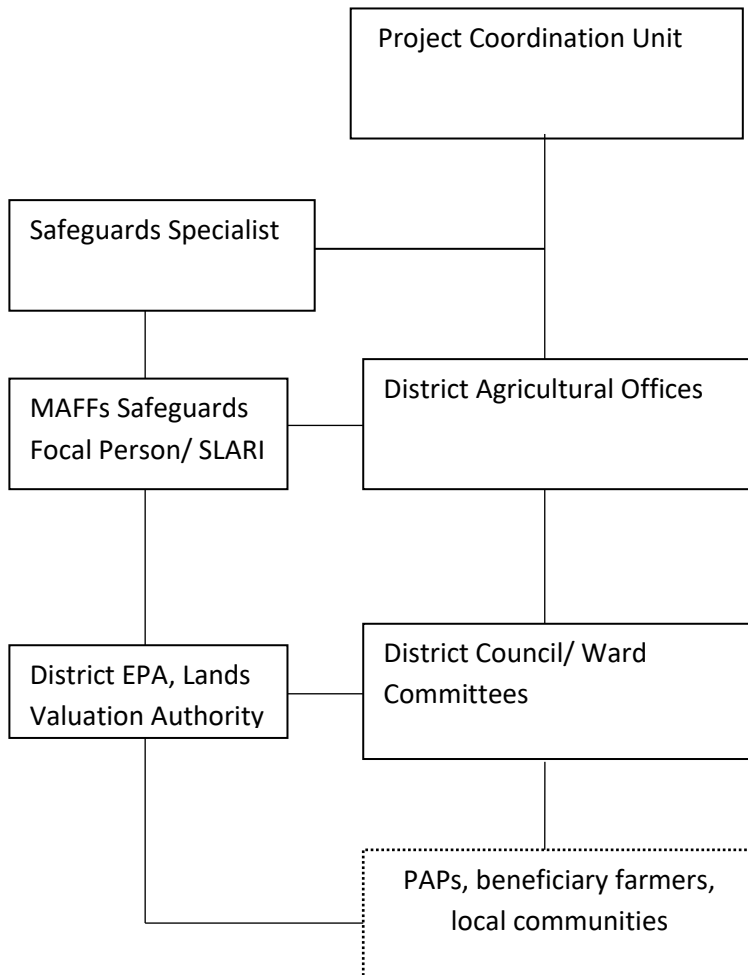


Figure 12.1 Proposed Organogram for RPF Implementation



12.4 Preparation of ARAPs/RAPs and Setting up of Resettlement Management Teams

Where an ARAP or RAP is prepared for any WAATP, subproject/activity, Resettlement Management Teams should be proposed and included in the documents. The resettlement management teams should consist of three smaller teams namely:

- Compensation Team;
- Grievance Redress Team; and
- Monitoring and Evaluation Team.

Where ARAPs/RAPs are required and have been approved by the World Bank for implementation, PCU in consultations with the District Agricultural Offices of MAFFS will set up these resettlement management teams in line with the provisions in the ARAP/RAP. The Compensation Team will be responsible for organizing and ensuring that compensations due or payable to PAPs are made in line with the provisions and procedures of this RPF.

The Grievance Redress Team will be responsible for receiving and logging complaints and resolving disputes. The team will undertake follow-ups on all measures taken to resolve each grievance or dispute to ensure that redress actions are implemented by whoever is mandated to undertake such action. The Monitoring and Evaluation Team will be responsible for the monitoring of the resettlement instrument implementation to ensure that stated targets are met and project affected persons are duly compensated in line with the provisions in the resettlement instrument.



13.0 BUDGET AND FUNDING

13.1 Estimated Budget to Implement RPF

The estimated budget for implementing the RPF is presented in **Table 13-1** below. The RPF will be the basis for the preparation and implementation of RAP/ARAP where required.

Table 13-1: Estimated Budget for RPF Implementation

No.	Activity	Description	Item	Unit cost, US\$	No	Total Cost, US\$
1.0	Training and Sensitization/ Awareness Creation (Reference Table 9-1, Row 6)	MAFFS (relevant directorates and other national stakeholders)	Workshop	6,000.00	1	6,000.00
		Farmers, District Agricultural Offices, District Councils	District Workshops (for 14 rural Districts)	4,000.00	14	56,000.00
		FBOs, CSOs, NGOs and Contractors	District Workshops (for 14 rural Districts)	2,000	14	28,000.00
		Radio Discussions	Local radio stations	5,000.00	-	5,000.00
2.0	RPF Disclosures	Disclosure of RPF - Advertisements	National Dailies	LS	-	5,000.00
		Disclosure of RPF – copies to stakeholders	All relevant stakeholders	LS	-	5,000.00
3.0	External Monitoring and Evaluation	Local Consultant	Lump sum fees	6,000.00	1	6,000.00
6.0	TOTAL					111,000.00



13.2 Budget for Preparation and Implementation of RAPs/ARAPs

The budget will be developed from the specific social surveys and mitigation/livelihood restoration measures to be developed under the preparation of the ARAP or RAP. It will cover resettlement activities including compensation cost for affected assets.

The cost will be derived from expenditures relating to (1) the preparation of the resettlement instrument, (2) relocation and transfer, (3) income losses and livelihood restoration plan, and (4) administrative costs. These bullet points give the cost centres:

Preparation of resettlement instrument (e.g. ARAP or RAP)

- Cost of survey of affected persons, valuation and inventory of assets
- Compensation payments for affected assets
- Fees of consultants/NGO to be engaged

Relocation Issues, if relevant

- Cost of moving and transporting items
- Cost of site and infrastructure development and services
- Subsistence allowance during transition
- Cost of replacement of businesses and downtime

Income and means of livelihood restoration plans

- Cost of estimating income losses and livelihood assistance

Administrative costs

- Operation and support staff
- Training and monitoring
- Technical assistance

Table 13.2 is a template for the itemization of budgets to be prepared under the resettlement plans with mainly cash compensation in mind. No resettlement housing is included. The template could be modified to suit local situation.

Table 13-2 Itemization of budget

#	ITEM	US\$
1.0	PREPARATORY PHASE COST	
1.1	Inventory of affected persons, assets and livelihoods	
1.2	Valuation fees (LVA or private valuer)	
1.3	Preparation of resettlement plans or compensation reports	
1.4	Subtotal 1 (Preparatory phase cost)	
2.0	COMPENSATION COST	
2.1	Compensation for permanent acquisition of land	



2.2	Compensation for temporary occupation of land	
2.3	Compensation for destruction of standing crops	
2.4	Compensation for destruction of permanent immovable structures	
2.5	Compensation for temporary displacement of moveable structures	
2.6	Subtotal 2 (Compensation cost)	
3.0	LIVELIHOOD RESTORATION /MITIGATION MEASURES COST	
3.1	Compensation for PAPs loss of income	
3.2	Compensation for business persons loss of income	
3.3	Cost of special assistance to vulnerable persons	
3.4	Subtotal 3 (Livelihood restoration/mitigation cost)	
4.0	CAPACITY BUILDING & IMPLEMENTATION COST	
4.1	Capacity building for key stakeholders	
4.2	Disclosure of resettlement instrument	
4.3	Logistical support and engagement of Safeguard Officer	
4.4	Cost for compensation disbursement/grievance redress/monitoring & evaluation activities	
4.5	Legal fees (in case of court dispute)	
4.6	Subtotal 4 (Capacity building & implementation cost)	
5.0	TOTAL COST (addition of all subtotals)	
6.0	CONTINGENCY (5%-10% OF TOTAL COST)	
7.0	GRAND TOTAL COST (Total Cost + Contingency)	

13.3 Sources and Arrangements for funding

According to its Involuntary Resettlement policy (OP 4.12), “the Bank does not disburse against cash compensation and other resettlement assistance paid in cash, or against the cost of land (including compensation for land acquisition). However, it may finance the cost of land improvement associated with resettlement activities.”

Compensation, land acquisition and resettlement related issues will be funded by the Government of Sierra Leone. The Ministry of Finance is expected to make funds available to the sector ministry i.e. the Ministry of Agriculture, Forestry, and Food Security (MAFFS) for the payment of compensation.



14.0 BIBLIOGRAPHY

Ministry of Agriculture, Forestry and Food Security (MAFFS)/World Bank, Resettlement Policy Framework (RPF), Smallholder Commercialization and Agribusiness Development Project (SCADP), November 2015

Ministry of Local Government/ Commonwealth Local Government Forum, Country Profile, The Local Government System in Sierra Leone,

Ministry of Lands, Country Planning and the Environment, Final National Land Policy of Sierra Leone, August 2015

Ministry of Agriculture, Forestry and Food Security (MAFFS), National Sustainable Agriculture Development Plan (2010-2030), Sierra Leone's Comprehensive African Agriculture Development Programme (Version Adapted by CAADP Compact 18th September 2009, Freetown)

Ministry of Energy, Energy Sector Utility Reform Project Additional Financing (P154439), Resettlement Policy Framework, September, 2015

Resettlement Policy Framework for the MOFA Ghana Commercial Agriculture Project study on Accra Plain Irrigation Development Project, Final Report. SAL Consult Ltd., November 2013.

Ministry of Food and Agriculture, West Africa Agricultural Transformation Programme, draft Project Implementation Manual.

Ministry of Food and Agriculture (2018) Ghana Concept Document- West Africa Agricultural Transformation Programme, (GoG/ WB), January 2018.

Ministry of Food and Agriculture, Draft Environmental Management Plan (EMP) West Africa Agricultural Productivity Programme (WAAPP), Accra.

Implementation Support Mission- Social Safeguards Supervision Mission Report, WAAPP2 /GHANA: 17th to 21st October 2016.



APPENDICES

Appendix 1	Screening checklist for identifying cases of involuntary resettlement
Appendix 2	Tasks/ToR for the preparation of RAP
Appendix 3	Tasks/ToR for the preparation of ARAP
Appendix 4	Framework for the Census of Affected Assets and Affected People
Appendix 5	Compensation Claim and Commitment Form
Appendix 6	Model Complaint Resolution Form
Appendix 7	List of Persons Consulted



Appendix 1: Screening checklist for identifying cases of involuntary resettlement

A. DETAILS OF PERSON DESIGNATED TO FILL OUT THIS FORM

Completed by (Name):

Contact details:

Job Title/ Designation:

Date:

Signature:

B. PROJECT/SUBPROJECT DESCRIPTION

Name of Project:

Name of Project Execution Entity/Organization:

Location of the Project:

Type of the Project:

Approximate size of the Project in land area:

Location of the project:

Region: District:

Town/Community:



C. THE CHECKLIST

Please fill in the checklist below by ticking applicable answer (Yes or No):

- i. Will the Project lead to permanent acquisition of the land? Yes/ No.....

- ii. Will the project lead to temporary occupation of the land or use of the land for a limited time frame? Yes...../No.....

- iii. Based on available sources, consultations with local community/ authorities, local knowledge and / or observations, could the project alter any cultural heritage site? Yes...../No.....

- iv. Will the project result in the physical displacement of people? Yes...../No.....

- v. Will the project result in the permanent removal or damage or demolition of structures or buildings? Yes...../No.....

- vi. Will the project result in the temporary removal or relocation of structures? Yes...../No.....

- vii. Will the project affect or block access to homes, organisations, farms, forest or any assets in general? Yes...../No.....

- viii. Will the project result in the permanent or temporary loss or damage to standing crops, fruit or economic trees? Yes...../No.....

- ix. Will the project result in the loss of income of affected farmer or business person? Yes...../No.....

- x. Will the project affect farmlands that have been cleared but not cultivated? Yes...../No.....

D. PROPOSED ACTION

If all the above answers are 'NO' except for the permanent land acquisition only or temporary land occupation only or both, please follow the requirements in the RPF to address any compensation issue.

If there is permanent land acquisition or temporary land occupation or no land acquisition and there is one or more of the above answers as YES, there is need for further action.



The number of affected persons need to be investigated further to determine which resettlement instrument to be prepared in line with the RPF to address the resettlement and compensation related issues.

E. COMMENTS BY PERSON FILLING THIS FORM

.....
.....
.....
.....

F. COMMENTS BY THE WAATP ENVIRONMENTAL/SOCIAL SAFEGUARD OFFICER OR PCU (The ESSO/PCU/WAATP should sign off this form and attach copy to the project proposal)

.....
.....
.....
.....

Name:

Date:

Signature:



Appendix 2: Tasks/ToR for the preparation of RAP

Reference: OP 4.12, annex A.

1. Description of the sub-project and of its potential land impacts
 - 1.1 General description of the project and identification of the project area
 - 1.2 Potential impacts. Identification of
 - 1.2.1 Project component or activities that give rise to resettlement;
 - 1.2.2 Zone of impact of such component or activities;
 - 1.2.3 Alternatives considered to avoid or minimize resettlement; and
 - 1.2.4 Mechanisms established to minimize resettlement, to the extent possible, during project implementation.
2. Objectives. The main objectives of the resettlement program
3. Socio-economic studies and census of affected assets and affected livelihoods. The findings of socio-economic studies and census to be conducted with the involvement of potentially displaced people include:
 - 3.1 The results of a census survey covering current occupants of the affected area to establish a basis for the design of the resettlement program and to exclude subsequent inflows of people from eligibility for compensation and resettlement assistance;
 - 3.2 Standard characteristics of displaced households, including a description of production systems, labour, and household organization; and baseline information on livelihoods (including, as relevant, production levels and income derived from both formal and informal economic activities) and standards of living (including health status) of the displaced population;
 - 3.3 The magnitude of the expected loss—total or partial—of assets, and the extent of displacement, physical or economic.
 - 3.4 Information on vulnerable groups or persons as provided for in OP 4.12, para. 8, for whom special provisions may have to be made;
 - 3.5 Provisions to update information on the displaced people's livelihoods and standards of living at regular intervals so that the latest information is available at the time of their displacement.
 - 3.6 Other studies describing the following
 - 3.6.1 Land tenure and transfer systems, including an inventory of common property natural resources from which people derive their livelihoods and sustenance, non-title-based usufruct systems (including fishing, grazing, or use of forest areas) governed by local recognized land allocation mechanisms, and any issues raised by different tenure systems in the project area;
 - 3.6.2 The patterns of social interaction in the affected communities, including social networks and social support systems, and how they will be affected by the project;
 - 3.6.3 Public infrastructure and social services that will be affected; and
 - 3.6.4 Social and cultural characteristics of displaced communities, including a description of formal and informal institutions (e.g., community organizations, ritual groups, nongovernmental organizations (NGOs)) that may be relevant to the consultation strategy and to designing and implementing the resettlement activities.
4. Legal and Institutional Framework.
 - 4.1 Summary of the information included in this RPF
 - 4.2 Local legal specificities if any



- 4.3 Local institutional specificities
 - 4.3.1 Identification of agencies locally responsible for resettlement activities and NGOs that may have a role in project implementation;
 - 4.3.2 Assessment of the institutional capacity of such agencies and NGOs; and
5. Eligibility and entitlements. Based on the definitions and categorization in this RPF (see entitlement matrix), definition of displaced persons and criteria for determining their eligibility for compensation and other resettlement assistance, including relevant cut-off dates.
6. Valuation of and compensation for losses. The methodology to be used in valuing losses to determine their replacement cost; and a description of the proposed types and levels of compensation under local law and such supplementary measures as are necessary to achieve replacement cost for lost assets.
7. Resettlement measures:
 - 7.1 Description of the packages of compensation and other resettlement measures that will assist each category of eligible displaced persons to achieve the objectives of the policy (see OP 4.12, para. 6).
 - 7.2 Site selection, site preparation, and relocation. Alternative relocation sites considered and explanation of those selected.
 - 7.3 Legal arrangements for regularizing tenure and transferring titles to resettlers.
 - 7.4 Housing, infrastructure, and social services.
 - 7.5 Environmental protection and management.
 - 7.6 Community participation. Involvement of resettlers and host communities
 - 7.7 Integration with host populations. Measures to mitigate the impact of resettlement on any host communities
 - 7.8 Specific assistance measures intended for vulnerable people, to be identified for instance amongst those listed in section 9 of the RPF
8. Grievance procedures. Based on the principle mechanisms described in this RPF, description of affordable and accessible procedures for third-party settlement of disputes arising from resettlement; such grievance mechanisms should take into account the availability of judicial recourse and community and traditional dispute settlement mechanisms.
9. Organizational responsibilities. The organizational framework for implementing resettlement, including identification of agencies responsible for delivery of resettlement measures and provision of services; arrangements to ensure appropriate coordination between agencies and jurisdictions involved in implementation; and any measures (including technical assistance) needed to strengthen the implementing agencies' capacity to design and carry out resettlement activities; provisions for the transfer to local authorities or resettlers themselves of responsibility for managing facilities and services provided under the project and for transferring other such responsibilities from the resettlement implementing agencies, when appropriate.
10. Implementation schedule. Based on the template presented in the RPF, present an implementation schedule covering all resettlement activities from preparation through implementation, including target dates for the achievement of expected benefits to resettlers and hosts and terminating the various forms of assistance. The schedule should indicate how the resettlement activities are linked to the implementation of the overall project.



11. Costs and budget. Tables showing itemized cost estimates for all resettlement activities (see Section 13 of this RPF), including special assistance to vulnerable persons and other contingencies.
12. Monitoring and evaluation. Arrangements for monitoring of resettlement activities by the implementing agency, supplemented by independent monitors as considered appropriate by the Bank, to ensure complete and objective information; performance monitoring indicators to measure inputs, outputs, and outcomes for resettlement activities; involvement of the displaced persons in the monitoring process; evaluation of the impact of resettlement for a reasonable period after all resettlement and related development activities have been completed; using the results of resettlement monitoring to guide subsequent implementation.



Appendix 3: Tasks/ToR for the Preparation of the ARAP

1. Description of the Project and Sub-Projects
 - 1.1. Sub-Project Land Needs
 - 1.2. Land Needs Justification and Minimization
2. Census Survey of Displaced Persons and Valuation of Assets
 - 2.1. Methodology
 - 2.2. Results
3. Affected Assets
4. Socio-Economic Features and Affected People's Livelihoods
5. Description of Compensation and Other Resettlement Assistance
6. Consultation with Displaced People
7. Procedures for Grievance Redress
8. Monitoring and Evaluation
9. Institutional Responsibilities and Arrangements for Implementation
10. Timetable, Budget and Funding Arrangements



Appendix 4: Framework for the Census of Affected Assets and Affected People

AFFECTED PLOT OR LAND SHEET

Reference/GPS Coordinates:

Location: Region: District: Community/ Village:

Surface:

Description of soil:

Crops

Perennial Crops:	1	Owner:
	2	Owner:
Annual Crops:	1	Owner:
	2	Owner:
Trees:	1	Owner:
	2	Owner

Structures: Owner

Channels: Owner:

Anti-erosive structures: Owner:

Buildings: Owner:

Users: User 1: Surface used: Regime of tenure:

User 2: Surface used: Regime of tenure:

User 3: Surface used: Regime of tenure:

User 4: Surface used: Regime of tenure:

Valuation proposal (details of calculation on attached sheet):

Crops:

Structures:

Proposed distribution of compensation:

User 1:

User 2:

User 3:

User 4:

Date: Prepared By:



AFFECTED BUILDING SHEET

Reference/ GPS Coordinates/Photograph number

Location: Region. District. Community/Village

Owner: Address:

Description:

Permanent Non-permanent

Surface: Number of rooms:

Walls: Material Condition

Roof: Material Condition

Floor: Material Condition

Annexes outside: Latrine: Bathroom: Kitchen: Others:

Additional features:

Permanently Inhabited: By: Regime of occupation:

Periodically Inhabited: By: Regime of occupation:

Valuation proposal (details of calculation on attached sheet):

Proposed distribution of compensation:

User 1:

User 2:

User 3:

User 4:

Date:

Prepared By:



AFFECTED HOUSEHOLD SHEET

Household Reference:

Location: Region: District: Village:

Photograph numbers for each household member

Reference of Affected Asset:

Type: Structure Plot Crop

Reference of Affected Asset Sheet:

Location: Zone: Region:

Household Information:

Head of Household: Name: Age: Sex:

Identity Document: Type: Number:

Number	Name	Relationship with Household Head	Sex	Age

Composition of Household:

Socio-Economic Information:

Occupations:

Head of Household:

Other members of Household:

Number: Occupation:

Number: Occupation:

Total Estimated Household Cash Income:

Education level of Household Members:

Project Impact:

Assessment of the Impact of the Loss of the Affected Asset on Household's Livelihood:

Proposed Compensation or Resettlement Package

Household's Wishes

Proposed Package

Proposed Livelihood Restoration or Assistance Package:

Household's Wishes

Proposed Package

Date:

Prepared By:



Appendix 5: Compensation Claim and Commitment Form

WAATP-MAFFS Form C1

COMPENSATION CLAIM & COMMITMENT FORM

WEST AFRICA AGRICULTURE TRANSFORMATION PRORAM

-COMPENSATION CLAIM FORM-

Affected Person Information:

Name of claimant: Sex: Age:

Name of Representative/Contact Person:

Region:Town: Community/Suburb:

Affected property:

Total Compensation Due:

Affected property value (GHS)	Disturbance (GHS)	Livelihood assistance (GHS)	Other supplementary assistance as necessary (GHS)	Total compensation (GHS)

Compensation Payment Commitment:

I,, having received the above total compensation amount for the land required/structures/crop(s) at the project site in question on(i.e. date of compensation payment), have agreed in principle to vacate or release the said land(s), for which compensation has been paid for the crops/structures/land thereon, on(agreed date when PAP should vacate or release the land).

Signature or Thumb print of claimant /recipient: Date:

Name of Administrator (MAFFS/Project Representative):

Signature of Administrator: Date:

Contact of Administrator:

Name of Witness: Signature of Witness

Contact of Witness:



Appendix 6: Model Complaint Registration and Resolution Form

WAATP Form CRRF1

COMPLAINT REGISTRATION & RESOLUTION FORM

WEST AFRICA AGRICULTURE TRANSFORMATION PROGRAM
-MODEL COMPLAINT REGISTRATION & RESOLUTION FORM-

Name (Complainant):

ID Number (PAPs ID number if any):

Contact Information (house number/ mobile phone):.....

Nature of Grievance or Complaint:

Details of Grievance:

.....
.....
.....
.....
.....

Name (Receiver): Signature:..... Date:.....

Name (Filer): Signature..... Date:.....

Relationship to Complainant (if different from Complainant):

Review/Resolution Level 1 (District) [] Level 2 (National) [] Level 3 (Court) []

Date of Conciliation Session:

Was Filer/Complainant Present?: Yes No

Was field verification of complaint conducted? Yes No

Findings of field investigation:.....

.....

Summary of Conciliation Session Discussion.....

Issues.....

.....

Was agreement reached on the issues? Yes No

If agreement was reached, detail the agreement:.....

.....

.....



If agreement was not reached, specify the points of disagreement:.....

.....
.....

Signed (Conciliator): Signed (Filer/Complainant):

Signed:
(Independent Observer e.g. Ward Committee representative/Opinion Leader)

Date:

Implementation of Agreement

Date of implementation:

Feedback from Filer/Complainant: Satisfied Not Satisfied

If satisfied, sign off & date:.....

.....

(Filer/Complainant)

(Conciliator)

If not satisfied, recommendation/way forward:.....

.....

.

.....

.

.....

.....
(Signature & date of Filer/Complainant)

.....
(Signature & date of Conciliator)



Appendix 7: Outcome of Stakeholder Consultation

STAKEHOLDER CONSULTATIONS	
20- 22 February 2018	
1.0	<p>MAFFS- Extension Services Persons consulted: Dennis Paul, Director</p>
	<ul style="list-style-type: none"> ✓ Key interest area is with respect to transfer of technology ✓ Presence in 14 districts ✓ WAAPP provided- motorbikes to extension officer, seed rice for farmers, logistics for field work (fuel), capacity building, training. No training provided in environmental safeguards ✓ WAAPP research through SLARI has been useful ✓ Environmental issues include mosquito prevalence during swamp development, climate change ✓ Differences in cultural and foreign approaches to example, seed planting. Culturally, 2-3 seeds per stand as against one seedling per stand by Japanese technology ✓ Little physical protection for farmers hence no protective equipment- clothes, boots etc. Most are sick by end of planting season. No protection during application of fertilisers ✓ Youth involved in various FBOs and may be greater in number. With right incentive can go far. Mechanization will be useful ✓ Importance of women acknowledged by the establishment of Women in Agriculture Desk ✓ WAAPP should take the process further and should be more mindful of environmental and social safeguards
2.0	<p>MAFFS- Crops Services Persons consulted: Henry Kargbo, Director and Hassan Kargbo, ---</p>
	<ul style="list-style-type: none"> ✓ One of the six divisions under the Ministry and has 5 units comprising: Food Crops, Horticulture; Tree Crops; Crops Protection and Fertiliser ✓ Environmental issues have arisen from work done by Fertiliser Unit and Crop Protection in the areas of application of agro- chemicals and avoidance of pollution of water bodies, land preparation ✓ Under WAAPP cassava and rice seeds have been provided to farming communities and used in a sustainable manner ✓ Worked with SLARI to certify seeds and been involved directly with multiplication and provision of planting material ✓ WAAPP provided vehicles, and maintenance of these vehicles during the life of the project. It further provided per diem for field work and fuel for vehicles. Staff benefitted from overseas training in relevant subjects. ✓ Expecting WAAPP to continue with good work and assist with seeds certification and multiplication as well as capacity building at all levels for relevant areas of specialization. Should develop capacity for environmental and social safeguards- proper application of agrochemical to avoid water pollution. Training most required at the district level ✓ There have been challenges with the application of foundation seeds from the sub- region which were eventually used as grain especially after the Ebola crisis. ✓ Reference to Plant Health Clinics which should be supported to bring farmers together and provide training in agro- chemicals and pests management.
3.0	<p>MAFFS- Gender in Agriculture and Nutrition- Mariama Turay, Head</p>



	<p>Sierra Leone Women Farmers Forum- Oya Josephine Kargbo, President/ Farmer</p> <ul style="list-style-type: none"> ✓ WAAPP support was phenomenal during the Ebola period ✓ Provided seeds to women, training on leadership, work was extensive throughout the country ✓ The Forum brings different women groups together and provides advocacy. Has improved capacity of women and youth farmers. Encouraging these groups to see farming as a business. Need to improve productivity and has paid attention to livestock and ruminants as well as vegetables and maize. Onions has been particularly important. ✓ Forum established in 2014 as an NGO and raises operational funds from members registration fees/ dues, MAFFS and from projects ✓ WAAPP was supportive with funds for fieldwork as well as provision of seeds and the so called Ebola rice ✓ Each group has about 25 to 30 members and with almost 800 FBOs. There are few cooperatives. ✓ Operations are nationwide comprising all the 14 districts. Have benefitted from international training programmes ✓ Expectation of WAAPP is more relevant training programmes, provision of vehicles/ motorbikes to ease mobility and indeed these have been expressed in meetings towards the preparation of the WAAPP. ✓ The Gender Division includes Youth, Gender, Nutrition and Farmer Health Units ✓ Challenges facing women farmers include equipment, processing, finance, and availability of labour. ✓ Social issues are critical in polygamous homes where men allow the women to compete for their attention hence forcing them to work ever so hard ✓ Training programmes have involved men and this should be intensified
4.0	<p>MAFFS- NGO Desk Persons consulted: Raymonda Johnson, Head</p>
	<ul style="list-style-type: none"> ✓ Link between government and NGOs ✓ Creates the enabling environment for NGOs ✓ NGOs to buy into national policies and to share the vision of the ministry ✓ Ensures NGOs are focused on their core mandates and using resources properly together with support form the Ministry of Finance ✓ Registration process involves payment of fees to Ministry of Finance, SLANGO and respective districts ✓ They are expected to produce quarterly reports and meetings are scheduled last Friday of the month. NGOs also have regular meetings at the district level where they operate ✓ Currently, about 30 NGOs registered with 20 quite active. ✓ Their services include training, providing seeds, tools to farmers, preparing learning materials, supporting farmers with loans/ grants, microfinance activities, village savings programmes, value addition programmes etc.
5.0	<p>Crop Division of MAFFS (District Agricultural Officer, Mohammed A Bah, +23278354828)</p>
	<ul style="list-style-type: none"> ✓ The Crop Division in Makeni tries to involve SLARI in all activities so the farmers can benefit from both institutions. SLARI works through the District Crop Division to have access to the farmers. For instance, new seeds such as Vita Potato and improved Cassava seeds produced by SLARI were disseminated to the farmers by the District Crops Division of MAFFS. ✓ The District was not involved in the implementation of the WAAPP. The Director, as an individual, has however been involved in the consultations for the preparation of WAAPP. ✓ Women are the main source of economic activity in the district and have more responsibility for the upkeep of their families. This is especially the case in traditional polygamous families as the wives literally compete to cater for their husbands since the men favour the most hardworking wife.
6.0	<p>National Federation of Farmers in Sierra Leone (NAFFSL)</p>



	<ul style="list-style-type: none"> ✓ Held discussions with both the executive and technical teams together. The executive is elected (supervised by INEC) while the technical team is appointed. Formative stages in 2008 and finally established in 2010 ✓ Has previously had three (3) meetings on WAATP. ✓ This is an umbrella organization for farmers in SL and provides advocacy and lobbying ✓ Undertakes monitoring on behalf of farmers and gives education ✓ Receives funding from government (only 10- 15%), membership through the FOs, specific projects including WAAPP, FAO. Funding levels not adequate and therefore a challenge ✓ Strength lies in the FOs and currently registered about 10 FOs in the 16 districts ✓ Gender issues severe and operations not sensitive to women. For example, implements not female friendly. Little focus on training of women to use equipment ✓ Environmental challenges regarding soil suitability vis-à-vis fertilizer types utilized. There are examples of some districts where fertilisers have been inappropriately used hence leading to soil fertility challenges. Mostly, abuse in the use of fertilisers ✓ More training required especially for women and youth in climate smart agriculture. Agriculture to be seen as business and training to include development of business plans ✓ Agriculture has not been attractive because its seen less as a commercial venture. Need to add value (processing) and ways developed for farmers to benefit commensurately ✓ Will require and have been pushing for opportunity to interact with EPA to have training. Such special forum not been successful yet. ✓ Training requirements for women and youth especially will include simpler presentations on business plans, processing and packaging ✓ Appreciate that WAAPP focused on strengthening institutions but WAATP must be more farmer focused. In that respect, WAAPP appears to have been successful as new technologies have been developed in respect of seeds etc ✓ The concept of Productive Learning Alliances to be promoted
7.0	Sierra Leone Chamber for Agricultural Development (SLECAD)
	<ul style="list-style-type: none"> ✓ This is a private sector institution established with the support of government and donor community. Seven staff membership as volunteers ✓ Focus on the private sector in agriculture and along the entire value chain ✓ Objective is to increase productivity and for export as well as job creation ✓ About 65 to 75% of economy anchored on agriculture and key players are the poor rural farmers ✓ Membership of the chamber includes processors, producers, fishermen union, traders union, transporters, researchers etc. ✓ Services include training and capacity building (business plans etc.); research and training (partnership with GIZ, EU, USAID etc.); support to advocacy (national policies on agriculture (recently on seed law, fertilizer law, access to finance policy (community banks) etc.); market facilitation and linkages (standard branding, food quality, storage, handling etc.); Value chain facilitation and linkages; Feasibility studies ✓ Was involved with WAAPP and contributed accordingly to its success ✓ Concerns about the appropriateness of technology and also quality of seeds. Instances of expired fertilisers ✓ SLECAD has led a forum for innovation regarding agricultural business development with assistance from FAO, ECOWAS etc. ✓ The US\$100m to export rice to feed police/ army could be invested in the sector to provide the commodity locally ✓ Grappling with issues relating to technology and finance. Insurance companies being courted ✓ So far, delighted with WAATP development because of the target at the grassroots including women and youth



	<ul style="list-style-type: none"> ✓ Private sector to drive agricultural business ✓ Expecting that SLECAD will be much stronger at the end of WAATP to be able to drive the sector ✓ Concerned about health and safety of farmers. Little or no protective wears ✓ Farmers are learning form each other, both good and bad ideas. ✓ Need for a good soil suitability map to assist in confirming best technologies under different soil conditions ✓ Women benefit more from farming in vegetables and groundnut and men may become uncomfortable when women spend more time on their farming and trading activities. Source of domestic friction ✓ Women have proven to be more reliable and focused. Earnings are used for the household including medical, education of children. Usually, women in polygamous are forced to work harder because of the competition for attention by the man. They do not have easy access or right to land
8.0	Sierra Leone Agriculture Research Institute (SLARI)
	<ul style="list-style-type: none"> ✓ SLARI is the number one beneficiary of the WAAPP ✓ NARC and RARC key beneficiaries out of the 6 centres ✓ NARC benefits include provision of water supply though borehole quality was poor. Internet connectivity still a challenge ✓ RARC had socio- cultural issues in relation to local community access to cotton tree which is sacred to them. Jetty was constructed with no impact on mangroves. Biological lab was constructed but awaiting furnishing ✓ Land ownership issues being attended to by government. Some encroachment on RARC land and will require fencing. NARC being hosted by University of Njala and cohabiting well. Total cost for land compensation to be paid by government is LE500million. Le100M was released to land owners and rest outstanding ✓ TELO is third centre being added under WAATP for livestock and ruminants and resting on 1500acres of leased land. Key challenges there include management of droppings. feed and litter are not separated. Clearing and disposal of litter must be done in an environmentally friendly manner ✓ Under WAAPP, equipment was procured and buildings constructed. Training (MSc and PhDs) were successful ✓ SLARI seemed to have benefited more under WAAPP because was able to put out a stronger proposal and it was obvious that the country needed infrastructure after the destruction by the war ✓ Expecting to graduate into centres of excellence with the implementation of the WAATP ✓ Has mechanism in place to interface well with the private sector including annual stakeholder conferences, field days when technologies are showcased (WAAPP and SLECAD have also promoted such events)
9.0	Western Area Rural Province, Koya Rural District 1. Women Farmers 2. Youth Farmers
	<ul style="list-style-type: none"> ✓ Kwama farmers mostly originate from Freetown to settle after flooding disasters ✓ There is the KWACOMA Agric Business Centre (ABC) comprising members from Kwama (25), Coal town (25) and Masinbara town (25 members). Altogether include 50 women out of the 75. ✓ Received loan of rice seeds and fertilizer which are paid back with harvested produce ✓ There are 193 ABCs nationwide and 52 have been earmarked for support which includes the KWACOMA ✓ There are more women than men in the groups and they are more focused and serious ✓ Key challenge has been availability of tools (hoe, shovel) for farming ✓ Require some machinery to lighten their burden ✓ FOs need help to mechanize into commercial farming and training is required



	<ul style="list-style-type: none"> ✓ The community was resettled from Freetown and given Le400,000 per household to settle in Kwama about 3 years ago ✓ They usually do group farming and support each other ✓ They have had issues with the quality of rice seeds given to them by the Ministry. Did not germinate at all but no response from the District Agriculture Office after lodging complaint. Had to resort to borrowing seeds for friends and well-wishers ✓ Soil and fertilizer are ok but no training as yet ✓ The ABC has management team comprising Manager, Financial Clerk, Operator and Storekeeper ✓ The executive include Chairperson, Secretary, Treasurer, Organiser/ PRO, Financial secretary, Advisor ✓ <u>Women group</u> ✓ Grow rice, maize, cassava and groundnuts ✓ Been borrowing seeds from friends ✓ Farm sizes vary from size of football park and various crops planted on same plot ✓ Challenges with pests but have no pesticides to deal with issues ✓ The supply of rice seeds from MAFFS not regular ✓ Labour is expensive. Have to pay men to assist on farms ✓ No security with regards to use of land ✓ The support from the FOs is crucial to sustain their activities as they are able to work as a group rather than individuals ✓ <u>Youth group</u> ✓ Main needs include machinery, seeds and training ✓ Require technical support to determine for example, time for planting, how to plant etc ✓ Issues include seed availability and quality ✓ Farms are located far from community and require some means of transport to access farms and to convey produce back to community. May take up to one hour to walk briskly to farm. ✓ Marketing of produce usually not problematic.
<p>10.0</p>	<p>Bombali Province- Makeni City District Agriculture Office- Monthly Stakeholders Meeting (MAFFS, NGOs, CBOs, FBOs, SLARI and WFP)</p>
	<p>Participated in the monthly coordination meeting, held on 22 February 2018, and the last Thursday of every month. The coordination meeting included stakeholders such as MAFFS, NGOs, CBOs, FBOs, SLARI and WFP. The programme involves a section called “science hour” where the farmers and participants are educated on particular subjects related to farming and improved agronomic practices. Copies of the presentations are provided to the farmers.</p> <p>The participants expressed their joy and gratitude for the “science hour” session, which was facilitated by SLARI.</p>
<p>11.0</p>	<p>Makeni District- NGOs (Inter Aide, Samako Agricultural Project, Wipe Our Tears, Farmers Network, CNC Watch New Africa Women and Children’s Foundation of Sierra Leone)</p>
	<ul style="list-style-type: none"> ✓ There is the need for funding, availability of equipment and capacity building to assist farmers improve crop production ✓ There is a need for more sensitisation and advocacy for women’s access to land for farming. The NGOs are available to assist in this respect. ✓ The Farmers’ Network is currently promoting the involvement of women and their capacity building in agriculture. ✓ The WAATP needs to work with groups of farmers so they can have a stronger voice. The NGOs will ensure that their activities do not result in division amongst the farmers.



	<ul style="list-style-type: none"> ✓ Experience show that women nurture the environment better than their male counterparts. They were able to better utilise compost produced from the ECOSAN project for their farms. ✓ Land was previously not a priority for women farmers. The government is promoting land ownership by women in agriculture. This is having an impact as men are supporting women more. Culture and traditions has a strong influence on the restriction of access of women to land. ✓ Cattle rearing and grazing is a big challenge and threat to crop production in the district. This especially affects women as they do not have a strong enough voice to oppose the cattle herders, since the cattle are usually owned by prominent people. ✓ The cattle Rearers and Crop Farmers Settlement Scheme was set up by the MAFFS and the Ministry of Lands, Country Planning and the Environment to address the conflict. There is, however, only one woman on the Committee and the Crop Division of the MAFFS is not represented. ✓ Synergies between crop production and cattle rearing, from traditional practice, could be explored to ensure peaceful coexistence. For instance, cow dung could be used as manure for farms. ✓ Most NGOs in the Bombali District are registered at the District level. Although it is expected this registration will be reflected at the national level with the Ministry of Finance and Economic Development, this is not the case. Identification of NGOs to work with under the WAATP should therefore extend to NGOs registered at the District level.
<p>12.0</p>	<p>Farmers in the Bombali District</p>
	<p><u>Support for Crop Production</u></p> <ul style="list-style-type: none"> ✓ The farmers are happy with the level of extension services provided in the Bombali District. The Network of farmers assists with monitoring. ✓ Need to diversify crop production in the country to reduce importation of food and also reduce poverty. <p><u>Environmental Impact and Climate Change Adaptation</u></p> <ul style="list-style-type: none"> ✓ Some farmers are aware of the impact their agricultural activities have on the land as evidenced by a recent situation where a farmer asked MAFFS to sign an undertaking to restore land after cultivation. ✓ The Ministry is promoting drought resistant seed varieties to help combat the impact of climate change. ✓ Inland Valley Swamp (IVS) farming is being promoted over upland farming which uses slash and burn and thereby results in greater impact on the environment. ✓ Need to introduce climate smart agricultural to help utilise vegetation cleared and biomass (charcoal from cut wood) to reduce the need for additional tree harvesting. <p><u>Capacity building</u></p> <ul style="list-style-type: none"> ✓ The capacity of the MAFFS need to be built to adequately support the farmers in the District with extension services and input. <p><u>Access to labour by women farmers</u></p> <ul style="list-style-type: none"> ✓ Women farmers incur high labour costs in hiring male labourers. ✓ There is a need for training of women in the operation of equipment such as power tillers and tractors to assist them in reducing labour costs. Women can be trained to operate farm machinery such as tractors and power tillers to assist them to make savings on the cost for hiring labour or machinery. The ministry carried some training for some women. <p><u>Access to land by women farmers</u></p> <ul style="list-style-type: none"> ✓ Women have access to lands but generally do not own the lands. ✓ The law provides equal land rights to both men and women. This is practiced in the cities. However, in the rural communities, the traditional and cultural land rights do not provide the same land rights. ✓ In the northern areas for instance, a woman loses all rights to land when he husband passes away. <p><u>Attitudinal change</u></p>



	<ul style="list-style-type: none">✓ There is generally an appreciable level of collaboration with the male farmers and their husbands. One challenge is that some men require their wives to cater for the home before leaving to their farms. They are therefore unable to start work early enough on their farms. Some women also need to assist their husbands with their farms before they can attend to their own farms.✓ There is the need for education of the male farmers to assist the female farmers since they significantly support the family.✓ Male farmers dominate discussions at the community level in the rural areas. <p><u>Participation of Youth</u></p> <ul style="list-style-type: none">✓ The youth do not see farming as a lucrative venture and rather engage in activities that result in immediate income such as motorbike riding.✓ The youth should be educated to understand the benefits of agriculture as a business to enable them fully participate <p><u>Access to finance</u></p> <ul style="list-style-type: none">✓ There is limited access to loans and grants to farmers. Recommend that farmers are provided with loans or grants at the initial stages to enable them to generate adequate capital to hire labourers or hire/purchase equipment.✓ There is a challenge of farmers not paying for fertiliser loans. The Network of farmers in the Bombali District is assistant the Ministry to recover fertiliser loans.
15.0	<u>World Food Programme Representative</u>
	<ul style="list-style-type: none">✓ The issue of land ownership by women requires special attention to empower women, who play a critical role in the support of the family✓ Loans to assist with crop production should be preferred over market loans which is the currently practice by the financial institutions✓ In order to ensure adequate help is provided to farmers, the amount given in loans should vary for different types of crops based on the capital requirements, for instance annual crop production should be different from loans provided for perennial crops.