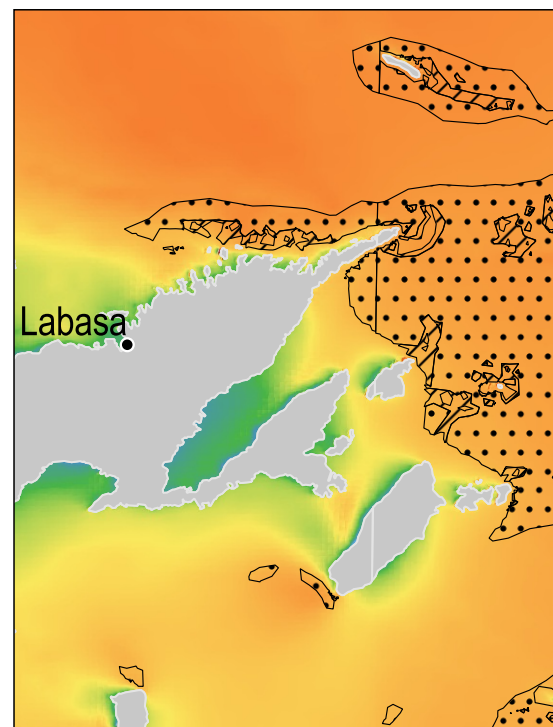
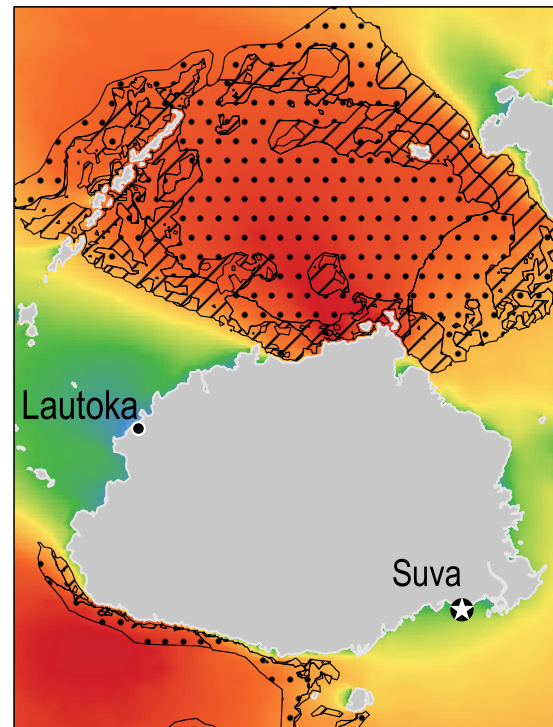
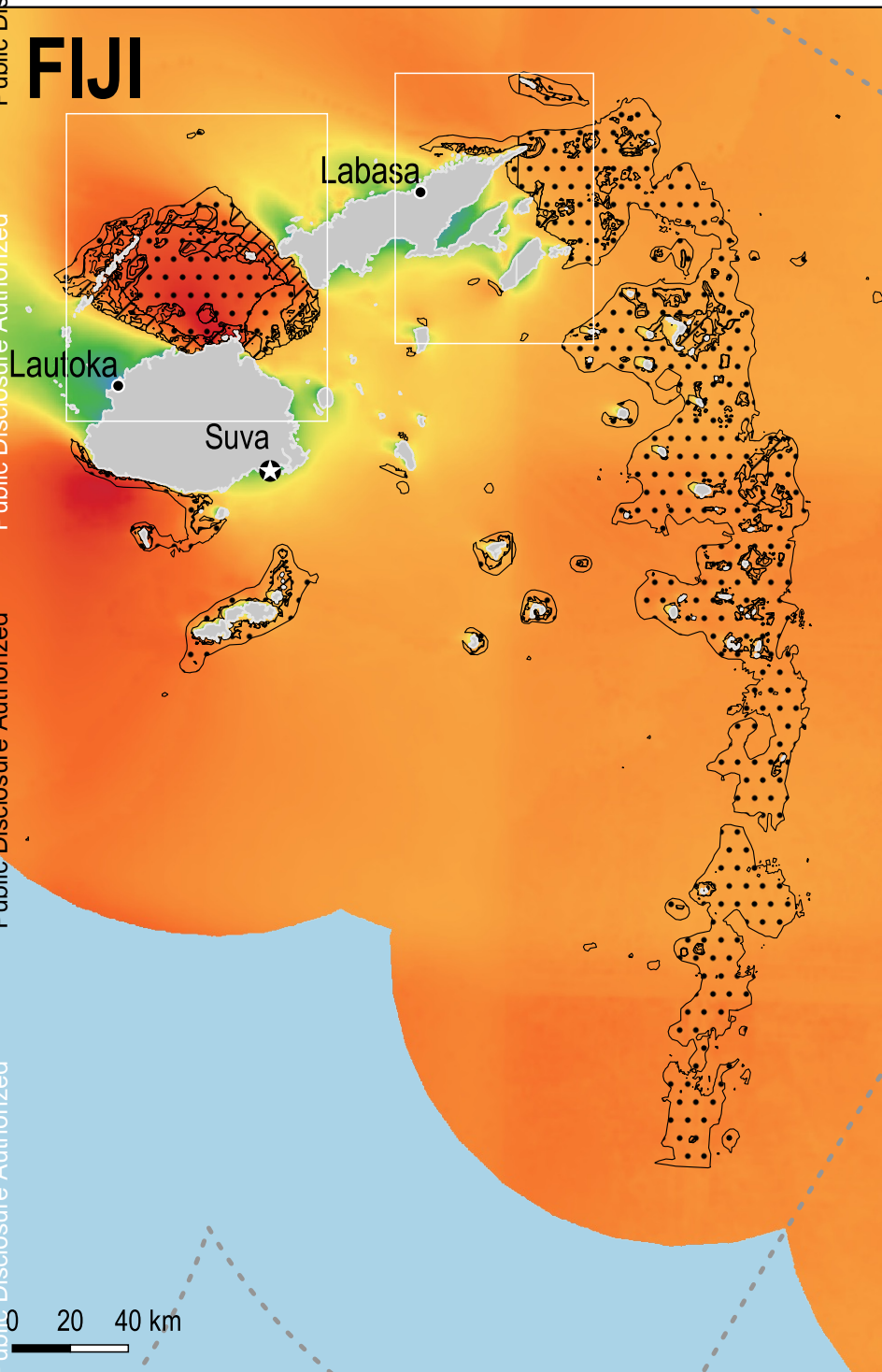


Offshore Wind Technical Potential in Fiji

Fixed: 27 GW || Floating: 159 GW || Total: 186 GW

Public Disclosure Authorized
Public Disclosure Authorized
Public Disclosure Authorized
Public Disclosure Authorized

FIJI



- Fixed (water depth < 50m)
- Floating (water depth < 1000m)
- Exclusive Economic Zone (EEZ)



This map shows the estimated technical potential for fixed and floating offshore wind in Fiji in terms of installed power capacity in gigawatts (GW) within 200 kilometers of the shoreline. It is provided under a World Bank Group (WBG) initiative on offshore wind that is funded and led by the Energy Sector Management Assistance Program (ESMAP). For more information and to obtain maps for other WBG client countries please visit: <https://esmap.org/offshore-wind>.

The methodology used to create this map is described in the WBG report published in October 2019 titled *Going Global: Expanding Offshore Wind to Emerging Markets*. The wind resource data is from the Global Wind Atlas (version 3.0), a free, web-based application that provides data with a 250 m resolution based on the latest input datasets and modeling methodologies. For more information: <https://globalwindatlas.info>.

The World Bank and ESMAP do not guarantee the accuracy of this data and accept no responsibility whatsoever for any consequences of their use. The boundaries, colors, denominations, and other information shown on any map in this series do not imply on the part of the World Bank any judgement on the legal status of any territory or the endorsement or acceptance of such boundaries.